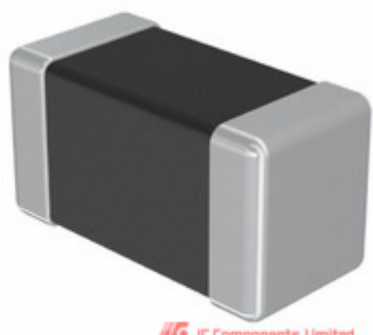


**TAIYO YUDEN**



IC Components Limited

**EMK042CG040CC-FW**

Manufacturer Part Number:	EMK042CG040CC-FW
Manufacturer / Brand:	Taiyo Yuden
Part of Description:	CAP CER 4PF 16V NP0 01005
Datasheets:	EMK042CG040CC-FW(1).pdf EMK042CG040CC-FW(2).pdf
Lead Free Status / RoHS Status:	Lead free / RoHS Compliant
Stock Condition:	New original, Stock Available.
Ship From:	Hong Kong
Shipment Way:	DHL/Fedex/TNT/UPS

[GET A QUOTE](#)

EMK042CG040CC-FW 100% New Original Opes in Stock, Find EMK042CG040CC-FW Price, Stock, datasheet at IC Components Ltd Online, buy EMK042CG040CC-FW Taiyo Yuden with warrantied. 100% guarantee confidence. RFQ EMK042CG040CC-FW: [Info@IC-Components.com](mailto:Info@IC-Components.com)

The specifications of EMK042CG040CC-FW

Part Number	EMK042CG040CC-FW	Manufacturer / Brand	Taiyo Yuden
Series	M	Moisture Sensitivity Level (MSL)	1 (Unlimited)
Package / Case	01005 (0402 Metric)	Packaging	Cut Tape (CT)
Mounting Type	Surface Mount, MLCC	Operating Temperature	-55°C ~ 125°C
Detailed Description	4pF ±0.25pF 16V Ceramic Capacitor C0G, NP0 01005 (0402 Metric)	Voltage - Rated	16V
Ratings	-	Size / Dimension	0.016" L x 0.008" W (0.40mm x 0.20mm)
Height - Seated (Max)	-	Features	-
Capacitance	4pF	Tolerance	±0.25pF
Applications	General Purpose	Lead Spacing	-
Temperature Coefficient	C0G, NP0	Thickness (Max)	0.009" (0.22mm)
Lead Style	-	Other Names	587-2264-1 EMK042CG040CCFW
Category	<a href="#">Capacitors &gt; Ceramic Capacitors</a>	Description	CAP CER 4PF 16V NP0 01005
Lead Free Status / RoHS Status	Lead free / RoHS Compliant		

Keywords related to EMK042CG040CC-FW

Taiyo Yuden EMK042CG040CC-FW	EMK042CG040CC-FW part	EMK042CG040CC-FW Price	EMK042CG040CC-FW Distributor
EMK042CG040CC-FW Technical	EMK042CG040CC-FW Stock	EMK042CG040CC-FW Inventory	EMK042CG040CC-FW Supplier
EMK042CG040CC-FW Online Order	EMK042CG040CC-FW Inquiry	EMK042CG040CC-FW Image	EMK042CG040CC-FW Picture
EMK042CG040CC-FW pdf	EMK042CG040CC-FW datasheet	EMK042CG040CC-FW data sheet	EMK042CG040CC-FW pdf datasheet
Download EMK042CG040CC-FW datasheet	Taiyo Yuden Manufacturer	Taiyo Yuden EMK042CG040CC-FW	

You May Be Also Be interested In:

<p><b>EMK042CG080DC-FW</b> Description: CAP CER 8PF 16V NP0 01005 Manufacturers: Taiyo Yuden In Stock: New original, Stock Available. Quote: <input type="button" value="RFQ"/></p>	<p><b>EMK042B7331MC-W</b> Description: CAP CER 330PF 16V X7R 01005 Manufacturers: Taiyo Yuden In Stock: New original, Stock Available. Quote: <input type="button" value="RFQ"/></p>	<p><b>EMK042B7681KC-W</b> Description: CAP CER 680PF 16V X7R 01005 Manufacturers: Taiyo Yuden In Stock: New original, Stock Available. Quote: <input type="button" value="RFQ"/></p>
<p><b>EMK042CG010CC-FW</b> Description: CAP CER 1PF 16V NP0 01005 Manufacturers: Taiyo Yuden In Stock: New original, Stock Available. Quote: <input type="button" value="RFQ"/></p>	<p><b>EMK042CG060DC-F</b> Description: CAP CER 6PF 16V NP0 01005 Manufacturers: Taiyo Yuden In Stock: New original, Stock Available. Quote: <input type="button" value="RFQ"/></p>	<p><b>EMK042CG030CC-F</b> Description: CAP CER 3PF 16V NP0 01005 Manufacturers: Taiyo Yuden In Stock: New original, Stock Available. Quote: <input type="button" value="RFQ"/></p>
<p><b>EMK042CG060DD-W</b> Description: CAP CER 6PF 16V NP0 01005 Manufacturers: Taiyo Yuden In Stock: New original, Stock Available. Quote: <input type="button" value="RFQ"/></p>	<p><b>EMK042CG010CD-W</b> Description: CAP CER 1PF 16V NP0 01005 Manufacturers: Taiyo Yuden In Stock: New original, Stock Available. Quote: <input type="button" value="RFQ"/></p>	<p><b>EMK042CG080DD-W</b> Description: CAP CER 8PF 16V NP0 01005 Manufacturers: Taiyo Yuden In Stock: New original, Stock Available. Quote: <input type="button" value="RFQ"/></p>
<p><b>EMK042CG030CC-FW</b> Description: CAP CER 3PF 16V NP0 01005 Manufacturers: Taiyo Yuden In Stock: New original, Stock Available. Quote: <input type="button" value="RFQ"/></p>	<p><b>EMK042B7471KC-W</b> Description: CAP CER 470PF 16V X7R 01005 Manufacturers: Taiyo Yuden In Stock: New original, Stock Available. Quote: <input type="button" value="RFQ"/></p>	<p><b>EMK042CG090DC-F</b> Description: CAP CER 9PF 16V NP0 01005 Manufacturers: Taiyo Yuden In Stock: New original, Stock Available. Quote: <input type="button" value="RFQ"/></p>
<p><b>EMK042B7681MC-W</b> Description: CAP CER 680PF 16V X7R 01005 Manufacturers: Taiyo Yuden In Stock: New original, Stock Available. Quote: <input type="button" value="RFQ"/></p>	<p><b>EMK042CG030CD-W</b> Description: CAP CER 3PF 16V NP0 01005 Manufacturers: Taiyo Yuden In Stock: New original, Stock Available. Quote: <input type="button" value="RFQ"/></p>	<p><b>EMK042CG090DC-FW</b> Description: CAP CER 9PF 16V NP0 01005 Manufacturers: Taiyo Yuden In Stock: New original, Stock Available. Quote: <input type="button" value="RFQ"/></p>
<p><b>EMK042CG050CC-F</b> Description: CAP CER 5PF 16V NP0 01005 Manufacturers: Taiyo Yuden In Stock: New original, Stock Available. Quote: <input type="button" value="RFQ"/></p>	<p><b>EMK042CG080DC-F</b> Description: CAP CER 8PF 16V NP0 01005 Manufacturers: Taiyo Yuden In Stock: New original, Stock Available. Quote: <input type="button" value="RFQ"/></p>	<p><b>EMK042CG070DC-FW</b> Description: CAP CER 7PF 16V NP0 01005 Manufacturers: Taiyo Yuden In Stock: New original, Stock Available. Quote: <input type="button" value="RFQ"/></p>
<p><b>EMK042CG060DC-FW</b> Description: CAP CER 6PF 16V NP0 01005 Manufacturers: Taiyo Yuden In Stock: New original, Stock Available. Quote: <input type="button" value="RFQ"/></p>	<p><b>EMK042CG050CD-W</b> Description: CAP CER 5PF 16V NP0 01005 Manufacturers: Taiyo Yuden In Stock: New original, Stock Available. Quote: <input type="button" value="RFQ"/></p>	<p><b>EMK042CG040CD-W</b> Description: CAP CER 4PF 16V NP0 01005 Manufacturers: Taiyo Yuden In Stock: New original, Stock Available. Quote: <input type="button" value="RFQ"/></p>
<p><b>EMK042CG020CC-F</b> Description: CAP CER 2PF 16V NP0 01005 Manufacturers: Taiyo Yuden In Stock: New original, Stock Available. Quote: <input type="button" value="RFQ"/></p>	<p><b>EMK042CG040CC-F</b> Description: CAP CER 4PF 16V NP0 01005 Manufacturers: Taiyo Yuden In Stock: New original, Stock Available. Quote: <input type="button" value="RFQ"/></p>	<p><b>EMK042CG070DC-F</b> Description: CAP CER 7PF 16V NP0 01005 Manufacturers: Taiyo Yuden In Stock: New original, Stock Available. Quote: <input type="button" value="RFQ"/></p>
<p><b>EMK042CG050CC-FW</b> Description: CAP CER 5PF 16V NP0 01005 Manufacturers: Taiyo Yuden In Stock: New original, Stock Available. Quote: <input type="button" value="RFQ"/></p>	<p><b>EMK042CG020CC-FW</b> Description: CAP CER 2PF 16V NP0 01005 Manufacturers: Taiyo Yuden In Stock: New original, Stock Available. Quote: <input type="button" value="RFQ"/></p>	<p><b>EMK042CG010CC-F</b> Description: CAP CER 1PF 16V NP0 01005 Manufacturers: Taiyo Yuden In Stock: New original, Stock Available. Quote: <input type="button" value="RFQ"/></p>
<p><b>EMK042CG020CD-W</b> Description: CAP CER 2PF 16V NP0 01005 Manufacturers: Taiyo Yuden In Stock: New original, Stock Available. Quote: <input type="button" value="RFQ"/></p>	<p><b>EMK042CG070DD-W</b> Description: CAP CER 7PF 16V NP0 01005 Manufacturers: Taiyo Yuden In Stock: New original, Stock Available. Quote: <input type="button" value="RFQ"/></p>	<p><b>EMK042B7471MC-W</b> Description: CAP CER 470PF 16V X7R 01005 Manufacturers: Taiyo Yuden In Stock: New original, Stock Available. Quote: <input type="button" value="RFQ"/></p>



**IC Components Limited**  
WWW.IC-COMPONENTS.COM

Email: [Info@IC-Components.com](mailto:Info@IC-Components.com)  
TEL: 00 852 - 30501935  
FAX: 00 852 - 30501945

Address: 6H Block 1, Sherwood Court, Kingswood Villa, Tin Shui Wai, New Territories, Hong Kong