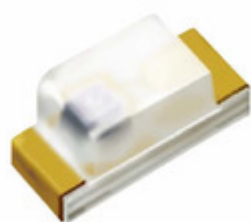


EVERLIGHT



IC Components Limited

19-21SYGC/S530-E1/TR8

Manufacturer Part Number:	19-21SYGC/S530-E1/TR8
Manufacturer / Brand	Everlight Electronics
Part of Description:	LED YELLOW/GREEN CLEAR 2SMD
Datasheets:	19-21SYGC/S530-E1/TR8.pdf
Lead Free Status / RoHS Status:	Lead free / RoHS Compliant
Stock Condition:	New original, 29900 pcs Stock Available.
Ship From:	Hong Kong
Shipment Way:	DHL/Fedex/TNT/UPS

[GET A QUOTE](#)

19-21SYGC/S530-E1/TR8 100% New Original 29900pcs in Stock, Find 19-21SYGC/S530-E1/TR8 Price, Stock, datasheet at IC Components Ltd Online, buy 19-21SYGC/S530-E1/TR8 Everlight Electronics with warrantied. 100% guarantee confidence. RFQ 19-21SYGC/S530-E1/TR8: Info@IC-Components.com

The specifications of 19-21SYGC/S530-E1/TR8

Part Number	19-21SYGC/S530-E1/TR8	Manufacturer / Brand	Everlight Electronics
Series	-	Moisture Sensitivity Level (MSL)	3 (168 Hours)
Package / Case	0603 (1608 Metric)	Packaging	Tape & Reel (TR)
Mounting Type	Surface Mount	Supplier Device Package	2-SMD
Detailed Description	Yellow-Green 573nm LED Indication - Discrete 2V 0603 (1608 Metric)	Color	Yellow-Green
Size / Dimension	1.60mm L x 0.80mm W	Height (Max)	0.80mm
Features	-	Configuration	Standard
Current - Test	20mA	Voltage - Forward (Vf) (Typ)	2V
Lens Style/Size	Rectangle with Flat Top, 1.20mm x 0.80mm	Millicandela Rating	16mcd
Wavelength - Peak	575nm	Viewing Angle	100°
Lens Color	Colorless	Lens Transparency	Clear
Wavelength - Dominant	573nm	Stock Quantity	29900 pcs Stock
Category	Optoelectronics > LED Indication - Discrete	Description	LED YELLOW/GREEN CLEAR 2SMD
Lead Free Status / RoHS Status	Lead free / RoHS Compliant		

Keywords realted to 19-21SYGC/S530-E1/TR8

Everlight Electronics 19-21SYGC/S530-E1/TR8	19-21SYGC/S530-E1/TR8 part	19-21SYGC/S530-E1/TR8 Price	19-21SYGC/S530-E1/TR8 Distributor
19-21SYGC/S530-E1/TR8 Technical	19-21SYGC/S530-E1/TR8 Stock	19-21SYGC/S530-E1/TR8 Inventory	19-21SYGC/S530-E1/TR8 Supplier
19-21SYGC/S530-E1/TR8 Online Order	19-21SYGC/S530-E1/TR8 Inquiry	19-21SYGC/S530-E1/TR8 Image	19-21SYGC/S530-E1/TR8 Picture
19-21SYGC/S530-E1/TR8 pdf	19-21SYGC/S530-E1/TR8 datasheet	19-21SYGC/S530-E1/TR8 data sheet	19-21SYGC/S530-E1/TR8 pdf datasheet
Download 19-21SYGC/S530-E1/TR8 datasheet	Everlight Electronics Manufacturer	Everlight Electronics 19-21SYGC/S530-E1/TR8	Everlight Electronics Co Ltd 19-21SYGC/S530-E1/TR8

You May Be Also Be interested In:

<p>19-21VRC/TR8(HT) Description: 19-21VRC/TR8(HT) EVERLIGHT LED Manufacturers: Everlight Electronics In Stock: New original, 2600 pcs Stock Available. Quote: <input type="button" value="RFQ"/></p>	<p>19-219UTD/S593/TR8 Description: 19-219UTD/S593/TR8 EVERLIGHT NA Manufacturers: Everlight Electronics In Stock: New original, 12000 pcs Stock Available. Quote: <input type="button" value="RFQ"/></p>	<p>19-22/R6G6C-A30/2T Description: 19-22/R6G6C-A30/2T EVERLIGHT SMD Manufacturers: Everlight Electronics In Stock: New original, 6000 pcs Stock Available. Quote: <input type="button" value="RFQ"/></p>
<p>19-21SYGC/S530-E1/S102/TR8 Description: 19-21SYGC/S530-E1/S102/TR8 0603 Manufacturers: Original In Stock: New original, 3000 pcs Stock Available. Quote: <input type="button" value="RFQ"/></p>	<p>19-21SRC/TR8 Description: 19-21SRC/TR8 EVERLIGHT SMD Manufacturers: Everlight Electronics In Stock: New original, 3000 pcs Stock Available. Quote: <input type="button" value="RFQ"/></p>	<p>19-21UBC/C430/TR8 Description: LED BLUE CLEAR SMD Manufacturers: Everlight Electronics In Stock: New original, 2000 pcs Stock Available. Quote: <input type="button" value="RFQ"/></p>
<p>19-21SURC Description: 19-21SURC SMD Manufacturers: Original In Stock: New original, 2800 pcs Stock Available. Quote: <input type="button" value="RFQ"/></p>	<p>19-21SUGC/E/TR8 Description: 19-21SUGC/E/TR8 EVERLIGHT LED Manufacturers: Everlight Electronics In Stock: New original, 1000 pcs Stock Available. Quote: <input type="button" value="RFQ"/></p>	<p>19-21UYC Description: 19-21UYC EVERLIGHT NA Manufacturers: Everlight Electronics In Stock: New original, 12000 pcs Stock Available. Quote: <input type="button" value="RFQ"/></p>
<p>19-219/T3D-AQ2R2TY/3T Description: LED COOL WHITE DIFFUSED SMD Manufacturers: Everlight Electronics In Stock: New original, 6000 pcs Stock Available. Quote: <input type="button" value="RFQ"/></p>	<p>19-21SURC/S350-A3/TR8 Description: 19-21SURC/S350-A3/TR8 EVERLIGHT LED Manufacturers: Everlight Electronics In Stock: New original, 4600 pcs Stock Available. Quote: <input type="button" value="RFQ"/></p>	<p>19-21VGC/S26/TR8 Description: 19-21VGC/S26/TR8 EVERLIGHT LED Manufacturers: Everlight Electronics In Stock: New original, 6000 pcs Stock Available. Quote: <input type="button" value="RFQ"/></p>
<p>19-21SUWC/S530-A2/TR8 Description: 19-21SUWC/S530-A2/TR8 EL SMD0603 Manufacturers: EL In Stock: New original, 24000 pcs Stock Available. Quote: <input type="button" value="RFQ"/></p>	<p>19-21SYGC/S530-E3/TR8 Description: 19-21SYGC/S530-E3/TR8 EVERLIGHT NA Manufacturers: Everlight Electronics In Stock: New original, 12000 pcs Stock Available. Quote: <input type="button" value="RFQ"/></p>	<p>19-21UYC/S530-A2/TR8 Description: 19-21UYC/S530-A2/TR8 EVERLIGHT SMD0603 Manufacturers: Everlight Electronics In Stock: New original, 6300 pcs Stock Available. Quote: <input type="button" value="RFQ"/></p>
<p>19-22/R6G6C-A01/2T Description: 19-22/R6G6C-A01/2T EVERLIGHT NA Manufacturers: Everlight Electronics In Stock: New original, 12000 pcs Stock Available. Quote: <input type="button" value="RFQ"/></p>	<p>19-21SYGC/S530-E2/TR8 Description: LED YELLOW/GREEN CLEAR 0603 SMD Manufacturers: Everlight Electronics In Stock: New original, 9000 pcs Stock Available. Quote: <input type="button" value="RFQ"/></p>	<p>19-21SQBC/S650-A2/TR8 Description: 19-21SQBC/S650-A2/TR8 EVERLIGHT SMD0603 Manufacturers: Everlight Electronics In Stock: New original, 4000 pcs Stock Available. Quote: <input type="button" value="RFQ"/></p>
<p>19-22/R6GHC-A32/2T Description: 19-22/R6GHC-A32/2T EVERLIGHT NA Manufacturers: Everlight Electronics In Stock: New original, 12000 pcs Stock Available. Quote: <input type="button" value="RFQ"/></p>	<p>19-22/R6BHC-B01/2T Description: 19-22/R6BHC-B01/2T EVERLIGHT NA Manufacturers: Everlight Electronics In Stock: New original, 12000 pcs Stock Available. Quote: <input type="button" value="RFQ"/></p>	<p>19-21UYOC/S3398/TR8 Description: 19-21UYOC/S3398/TR8 EVERLIGHT SMD0603 Manufacturers: Everlight Electronics In Stock: New original, 9000 pcs Stock Available. Quote: <input type="button" value="RFQ"/></p>
<p>19-21SURC/S530-A2 Description: 19-21SURC/S530-A2 EVERLIGHT SMD Manufacturers: Everlight Electronics In Stock: New original, 5500 pcs Stock Available. Quote: <input type="button" value="RFQ"/></p>	<p>19-218UWD/S327/TR8(TF) Description: 19-218UWD/S327/TR8(TF) EVERLIGHT SMD Manufacturers: Everlight Electronics In Stock: New original, 1800 pcs Stock Available. Quote: <input type="button" value="RFQ"/></p>	<p>19-21SURC/S530-A3/TR8 Description: LED RED CLEAR SMD Manufacturers: Everlight Electronics In Stock: New original, 9000 pcs Stock Available. Quote: <input type="button" value="RFQ"/></p>
<p>19-21SRC/S416/TR8 Description: 19-21SRC/S416/TR8 EVERLIGHT O603 Manufacturers: Everlight Electronics In Stock: New original, 14600 pcs Stock Available. Quote: <input type="button" value="RFQ"/></p>	<p>19-218UWD/S327/TR8 Description: 19-218UWD/S327/TR8 EVERLIGHT LED Manufacturers: Everlight Electronics In Stock: New original, 1300 pcs Stock Available. Quote: <input type="button" value="RFQ"/></p>	<p>19-21VGC/TR8 Description: 19-21VGC/TR8 EVERLIGHT SMD0603 Manufacturers: Everlight Electronics In Stock: New original, 3000 pcs Stock Available. Quote: <input type="button" value="RFQ"/></p>
<p>19-21UYOC/S530-A2/TR8 Description: 19-21UYOC/S530-A2/TR8 EVERLIGHT SMD Manufacturers: Everlight Electronics In Stock: New original, 3000 pcs Stock Available. Quote: <input type="button" value="RFQ"/></p>	<p>19-21SYGC/TR8 Description: 19-21SYGC/TR8 EVERLIGHT SMD0603 Manufacturers: Everlight Electronics In Stock: New original, 4000 pcs Stock Available. Quote: <input type="button" value="RFQ"/></p>	<p>19-21SYGC/S530-E1 Description: 19-21SYGC/S530-E1 EVERLIGHT 1608 Manufacturers: Everlight Electronics In Stock: New original, 2800 pcs Stock Available. Quote: <input type="button" value="RFQ"/></p>



IC Components Limited
WWW.IC-COMPONENTS.COM

Email: Info@IC-Components.com
 TEL: 00 852 - 30501935
 FAX: 00 852 - 30501945

Address: 6H Block 1, Sherwood Court, Kingswood Villa, Tin Shui Wai, New Territories, Hong Kong