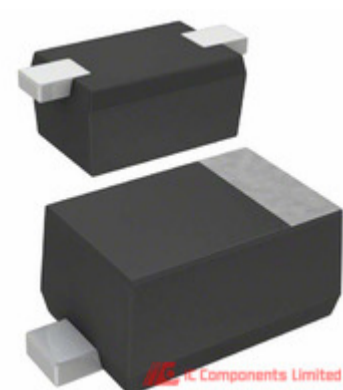


Panasonic



MA2SD320GL

Manufacturer Part Number:	MA2SD320GL
Manufacturer / Brand:	Panasonic
Part of Description:	DIODE SCHOTTKY 30V 200MA SSMINI2
Datasheets:	MA2SD320GL.pdf
Lead Free Status / RoHS Status:	Lead free / RoHS Compliant
Stock Condition:	New original, 2331700 pcs Stock Available.
Ship From:	Hong Kong
Shipment Way:	DHL/Fedex/TNT/UPS

GET A QUOTE

MA2SD320GL 100% New Original 2331700pcs in Stock, Find MA2SD320GL Price, Stock, datasheet at IC Components Ltd Online, buy MA2SD320GL Panasonic with warrantied. 100% guarantee confidence. RFQ MA2SD320GL: Info@IC-Components.com

The specifications of MA2SD320GL

Part Number	MA2SD320GL	Manufacturer / Brand	Panasonic
Series	-	Moisture Sensitivity Level (MSL)	1 (Unlimited)
Base Part Number	MA2SD32	Package / Case	SC-79, SOD-523
Packaging	Original-Reel®	Mounting Type	Surface Mount
Supplier Device Package	SSMini2-F4	Operating Temperature - Junction	125°C (Max)
Detailed Description	Diode Schottky 30V 200mA Surface Mount SSMINI2-F4	Diode Type	Schottky
Current - Average Rectified (Io)	200mA	Voltage - Forward (Vf) (Max) @ If	560mV @ 200mA
Current - Reverse Leakage @ Vr	5µA @ 30V	Voltage - DC Reverse (Vr) (Max)	30V
Speed	Small Signal =< 200mA (Io), Any Speed	Reverse Recovery Time (trr)	2ns
Capacitance @ Vr, F	25pF @ 0V, 1MHz	Other Names	MA2SD320GLDKR
Stock Quantity	2331700 pcs Stock	Category	Discrete Semiconductor Products > Diodes - Rectifiers - Single
Description	DIODE SCHOTTKY 30V 200MA SSMINI2	Lead Free Status / RoHS Status	Lead free / RoHS Compliant

Keywords realted to MA2SD320GL

Panasonic MA2SD320GL	MA2SD320GL part	MA2SD320GL Price	MA2SD320GL Distributor
MA2SD320GL Technical	MA2SD320GL Stock	MA2SD320GL Inventory	MA2SD320GL Supplier
MA2SD320GL Online Order	MA2SD320GL Inquiry	MA2SD320GL Image	MA2SD320GL Picture
MA2SD320GL pdf	MA2SD320GL datasheet	MA2SD320GL data sheet	MA2SD320GL pdf datasheet
Download MA2SD320GL datasheet	Panasonic Manufacturer	Panasonic MA2SD320GL	Panasonic - Consumer Division MA2SD320GL
Panasonic - Consumer Electronics Corp. MA2SD320GL	Panasonic Battery Group MA2SD320GL	Panasonic Electric Works - ACSD MA2SD320GL	Panasonic Electronic Components - Semiconductor Pr MA2SD320GL
Panasonic - ATG MA2SD320GL	Panasonic - BSG MA2SD320GL	Panasonic - DTG MA2SD320GL	Panasonic Electric Works MA2SD320GL
Panasonic Electronic Components MA2SD320GL	Panasonic Industrial Automation Sales MA2SD320GL	Panasonic Semiconductor MA2SD320GL	

You May Be Also Be interested In:

<p>Panasonic</p> <p>MA2SD310GL+</p> <p>Description: MA2SD310GL+ PANASONIC SOD523</p> <p>Manufacturers: Panasonic</p> <p>In Stock: New original, 15000 pcs Stock Available.</p> <p>Quote: <input type="text" value="RFQ"/></p>	<p>MA2SV0100L</p> <p>Description: DIODE VARIABLE CAP 6V SSMINI-2P</p> <p>Manufacturers: Panasonic</p> <p>In Stock: New original, 5700 pcs Stock Available.</p> <p>Quote: <input type="text" value="RFQ"/></p>	<p>Panasonic</p> <p>MA2SD32</p> <p>Description: MA2SD32 Panasonic SOD-523SSMini2-F1060</p> <p>Manufacturers: Panasonic</p> <p>In Stock: New original, 213400 pcs Stock Available.</p> <p>Quote: <input type="text" value="RFQ"/></p>
<p>MA2SV0300L</p> <p>Description: DIODE VARIABLE CAP 6V SSMINI-2P</p> <p>Manufacturers: Panasonic</p> <p>In Stock: New original, 5200 pcs Stock Available.</p> <p>Quote: <input type="text" value="RFQ"/></p>	<p>Panasonic</p> <p>MA2SV01001JN</p> <p>Description: MA2SV01001JN Panasonic SOD-523</p> <p>Manufacturers: Panasonic</p> <p>In Stock: New original, 2100 pcs Stock Available.</p> <p>Quote: <input type="text" value="RFQ"/></p>	<p>Panasonic</p> <p>MA2SV03002AL</p> <p>Description: MA2SV03002AL Panasonic SOD-523SS-Mini</p> <p>Manufacturers: Panasonic</p> <p>In Stock: New original, 100 pcs Stock Available.</p> <p>Quote: <input type="text" value="RFQ"/></p>
<p>Panasonic</p> <p>MA2SD32008SO</p> <p>Description: MA2SD32008SO Panasonic SOD-523SSMini2-F1060</p> <p>Manufacturers: Panasonic</p> <p>In Stock: New original, 19600 pcs Stock Available.</p> <p>Quote: <input type="text" value="RFQ"/></p>	<p>MA2SD310GL</p> <p>Description: DIODE SCHOTTKY 30V 200MA SSMINI2</p> <p>Manufacturers: Panasonic</p> <p>In Stock: New original, 3000 pcs Stock Available.</p> <p>Quote: <input type="text" value="RFQ"/></p>	<p>Panasonic</p> <p>MA2SP050GL+</p> <p>Description: MA2SP050GL+ Panasonic SOD-523</p> <p>Manufacturers: Panasonic</p> <p>In Stock: New original, 3200 pcs Stock Available.</p> <p>Quote: <input type="text" value="RFQ"/></p>
<p>Panasonic</p> <p>MA2SD310GLBF</p> <p>Description: MA2SD310GLBF PANASONIC SOD-523</p> <p>Manufacturers: Panasonic</p> <p>In Stock: New original, 117000 pcs Stock Available.</p> <p>Quote: <input type="text" value="RFQ"/></p>	<p>Panasonic</p> <p>MA2SV01001MC</p> <p>Description: MA2SV01001MC Panasonic SOD-523SS-Mini</p> <p>Manufacturers: Panasonic</p> <p>In Stock: New original, 300 pcs Stock Available.</p> <p>Quote: <input type="text" value="RFQ"/></p>	<p>Panasonic</p> <p>MA2SD320G8S0</p> <p>Description: MA2SD320G8S0 PANASONIC SOT523</p> <p>Manufacturers: Panasonic</p> <p>In Stock: New original, 32000 pcs Stock Available.</p> <p>Quote: <input type="text" value="RFQ"/></p>
<p>Panasonic</p> <p>MA2SD320G8SO+</p> <p>Description: MA2SD320G8SO+ PANASONIC 07</p> <p>Manufacturers: Panasonic</p> <p>In Stock: New original, 8000 pcs Stock Available.</p> <p>Quote: <input type="text" value="RFQ"/></p>	<p>Panasonic</p> <p>MA2SV020S1TD</p> <p>Description: MA2SV020S1TD Panasonic SOD-523SS-Mini</p> <p>Manufacturers: Panasonic</p> <p>In Stock: New original, 540000 pcs Stock Available.</p> <p>Quote: <input type="text" value="RFQ"/></p>	<p>MA2SD3100L</p> <p>Description: DIODE SCHOTTKY 30V 200MA SSMINI2</p> <p>Manufacturers: Panasonic</p> <p>In Stock: New original, 16000 pcs Stock Available.</p> <p>Quote: <input type="text" value="RFQ"/></p>
<p>MA2SD3200L</p> <p>Description: DIODE SCHOTTKY 30V 200MA SSMINI2</p> <p>Manufacturers: Panasonic</p> <p>In Stock: New original, 204000 pcs Stock Available.</p> <p>Quote: <input type="text" value="RFQ"/></p>	<p>MA2SE0100L</p> <p>Description: DIODE SCHOTTKY 20V 35MA SSMINI2</p> <p>Manufacturers: Panasonic</p> <p>In Stock: New original, 2700 pcs Stock Available.</p> <p>Quote: <input type="text" value="RFQ"/></p>	<p>Panasonic</p> <p>MA2SD320GLBF</p> <p>Description: MA2SD320GLBF PANASONIC SOD523</p> <p>Manufacturers: Panasonic</p> <p>In Stock: New original, 31400 pcs Stock Available.</p> <p>Quote: <input type="text" value="RFQ"/></p>
<p>IMAGE NOT AVAILABLE</p> <p>MA2SD31-TX</p> <p>Description: MA2SD31-TX Panasoni SOD523</p> <p>Manufacturers: Panasoni</p> <p>In Stock: New original, 27000 pcs Stock Available.</p> <p>Quote: <input type="text" value="RFQ"/></p>	<p>Panasonic</p> <p>MA2SD3100L/MA2SD31</p> <p>Description: MA2SD3100L/MA2SD31 PANASONIC 0603</p> <p>Manufacturers: Panasonic</p> <p>In Stock: New original, 5100 pcs Stock Available.</p> <p>Quote: <input type="text" value="RFQ"/></p>	<p>Panasonic</p> <p>MA2SD320G8S0+</p> <p>Description: MA2SD320G8S0+ PANASONIC SOD523</p> <p>Manufacturers: Panasonic</p> <p>In Stock: New original, 207800 pcs Stock Available.</p> <p>Quote: <input type="text" value="RFQ"/></p>
<p>MA2SD32008S</p> <p>Description: MA2SD32008S ROHM SOT-523</p> <p>Manufacturers: LAPIS Semiconductor</p> <p>In Stock: New original, 23800 pcs Stock Available.</p> <p>Quote: <input type="text" value="RFQ"/></p>	<p>MA2SV0200L</p> <p>Description: DIODE VARIABLE CAP 6V SSMINI-2P</p> <p>Manufacturers: Panasonic</p> <p>In Stock: New original, 38900 pcs Stock Available.</p> <p>Quote: <input type="text" value="RFQ"/></p>	<p>Panasonic</p> <p>MA2SP0100L-(TX)</p> <p>Description: MA2SP0100L-(TX) PANASONIC SOD423</p> <p>Manufacturers: Panasonic</p> <p>In Stock: New original, 27000 pcs Stock Available.</p> <p>Quote: <input type="text" value="RFQ"/></p>
<p>MA2SP0500L</p> <p>Description: DIODE PIN 60V 50MA SSMINI-2P</p> <p>Manufacturers: Panasonic</p> <p>In Stock: New original, 3000 pcs Stock Available.</p> <p>Quote: <input type="text" value="RFQ"/></p>	<p>MA2SP060GL</p> <p>Description: DIODE PIN 60V 100MA SSMINI-2P</p> <p>Manufacturers: Panasonic</p> <p>In Stock: New original, 18000 pcs Stock Available.</p> <p>Quote: <input type="text" value="RFQ"/></p>	<p>Panasonic</p> <p>MA2SD3200L+</p> <p>Description: MA2SD3200L+ PANASONIC SOD523</p> <p>Manufacturers: Panasonic</p> <p>In Stock: New original, 13000 pcs Stock Available.</p> <p>Quote: <input type="text" value="RFQ"/></p>
<p>Panasonic</p> <p>MA2SV030P2LW</p> <p>Description: MA2SV030P2LW panasonic SOD-523</p> <p>Manufacturers: Panasonic</p> <p>In Stock: New original, 3000 pcs Stock Available.</p> <p>Quote: <input type="text" value="RFQ"/></p>	<p>Panasonic</p> <p>MA2SD3100L-(TX)</p> <p>Description: MA2SD3100L-(TX) PANASONIC SOD-523</p> <p>Manufacturers: Panasonic</p> <p>In Stock: New original, 3000 pcs Stock Available.</p> <p>Quote: <input type="text" value="RFQ"/></p>	<p>Panasonic</p> <p>MA2SD320GL+</p> <p>Description: MA2SD320GL+ Panasonic SOD-523</p> <p>Manufacturers: Panasonic</p> <p>In Stock: New original, 111000 pcs Stock Available.</p> <p>Quote: <input type="text" value="RFQ"/></p>



IC Components Limited
WWW.IC-COMPONENTS.COM

Email: Info@IC-Components.com
TEL: 00 852 - 30501935
FAX: 00 852 - 30501945

Address: 6H Block 1, Sherwood Court, Kingswood Villa, Tin Shui Wai, New Territories, Hong Kong