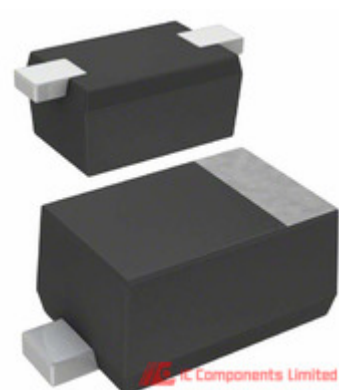


**Panasonic**



**MA2SP0500L**

Manufacturer Part Number:	MA2SP0500L
Manufacturer / Brand	Panasonic
Part of Description:	DIODE PIN 60V 50MA SSMINI-2P
Datasheets:	MA2SP0500L.pdf
Lead Free Status / RoHS Status:	Lead free / RoHS Compliant
Stock Condition:	New original, 3000 pcs Stock Available.
Ship From:	Hong Kong
Shipment Way:	DHL/Fedex/TNT/UPS

**GET A QUOTE**

**MA2SP0500L** 100% New Original 3000pcs in Stock, Find MA2SP0500L Price, Stock, datasheet at IC Components Ltd Online, buy MA2SP0500L Panasonic with warrantied. 100% guarantee confidence. RFQ MA2SP0500L: [Info@IC-Components.com](mailto:Info@IC-Components.com)

The specifications of MA2SP0500L

Part Number	MA2SP0500L	Manufacturer / Brand	Panasonic
Series	-	Moisture Sensitivity Level (MSL)	1 (Unlimited)
Base Part Number	MA2SP05	Package / Case	SC-79, SOD-523
Packaging	Original-Reel®	Supplier Device Package	SSMini2-F1
Operating Temperature	150°C (TJ)	Detailed Description	RF Diode PIN - Single 60V 50mA SSMINI2-F1
Current - Max	50mA	Diode Type	PIN - Single
Voltage - Peak Reverse (Max)	60V	Capacitance @ Vr, F	2.4pF @ 0V, 1MHz
Resistance @ If, F	5.5 Ohm @ 10mA, 100MHz	Other Names	MA2SP0500LDKR
Stock Quantity	3000 pcs Stock	Category	Discrete Semiconductor Products > Diodes - RF
Description	DIODE PIN 60V 50MA SSMINI-2P	Lead Free Status / RoHS Status	Lead free / RoHS Compliant

Keywords related to MA2SP0500L

Panasonic MA2SP0500L	MA2SP0500L part	MA2SP0500L Price	MA2SP0500L Distributor
MA2SP0500L Technical	MA2SP0500L Stock	MA2SP0500L Inventory	MA2SP0500L Supplier
MA2SP0500L Online Order	MA2SP0500L Inquiry	MA2SP0500L Image	MA2SP0500L Picture
MA2SP0500L pdf	MA2SP0500L datasheet	MA2SP0500L data sheet	MA2SP0500L pdf datasheet
Download MA2SP0500L datasheet	Panasonic Manufacturer	Panasonic MA2SP0500L	Panasonic - Consumer Division MA2SP0500L
Panasonic - Consumer Electronics Corp. MA2SP0500L	Panasonic Battery Group MA2SP0500L	Panasonic Electric Works - ACSD MA2SP0500L	Panasonic Electronic Components - Semiconductor Pr MA2SP0500L
Panasonic - ATG MA2SP0500L	Panasonic - BSG MA2SP0500L	Panasonic - DTG MA2SP0500L	Panasonic Electric Works MA2SP0500L
Panasonic Electronic Components MA2SP0500L	Panasonic Industrial Automation Sales MA2SP0500L	Panasonic Semiconductor MA2SP0500L	

You May Be Also Be interested In:

<p><b>Panasonic</b></p> <p><b>MA2SD32</b></p> <p>Description: MA2SD32 Panasonic SOD-523SSMini2-F1060</p> <p>Manufacturers: Panasonic</p> <p>In Stock: New original, 213400 pcs Stock Available.</p> <p>Quote: <input type="button" value="RFQ"/></p>	<p><b>Panasonic</b></p> <p><b>MA2SV020S1TD</b></p> <p>Description: MA2SV020S1TD Panasonic SOD-523SS-Mini</p> <p>Manufacturers: Panasonic</p> <p>In Stock: New original, 540000 pcs Stock Available.</p> <p>Quote: <input type="button" value="RFQ"/></p>	<p><b>MA2SD320GL</b></p> <p>Description: DIODE SCHOTTKY 30V 200MA SSMINI2</p> <p>Manufacturers: Panasonic</p> <p>In Stock: New original, 2331700 pcs Stock Available.</p> <p>Quote: <input type="button" value="RFQ"/></p>
<p><b>Panasonic</b></p> <p><b>MA2SD320G8S0+</b></p> <p>Description: MA2SD320G8S0+ PANASONIC SOD523</p> <p>Manufacturers: Panasonic</p> <p>In Stock: New original, 207800 pcs Stock Available.</p> <p>Quote: <input type="button" value="RFQ"/></p>	<p><b>MA2SV0400L</b></p> <p>Description: DIODE VARIABLE CAP 6V SSMINI-2P</p> <p>Manufacturers: Panasonic</p> <p>In Stock: New original, 1400 pcs Stock Available.</p> <p>Quote: <input type="button" value="RFQ"/></p>	<p><b>Panasonic</b></p> <p><b>MA2SD310GLBF</b></p> <p>Description: MA2SD310GLBF PANASONIC SOD-523</p> <p>Manufacturers: Panasonic</p> <p>In Stock: New original, 117000 pcs Stock Available.</p> <p>Quote: <input type="button" value="RFQ"/></p>
<p><b>Panasonic</b></p> <p><b>MA2SP0100L-(TX)</b></p> <p>Description: MA2SP0100L-(TX) PANASONIC SOD423</p> <p>Manufacturers: Panasonic</p> <p>In Stock: New original, 27000 pcs Stock Available.</p> <p>Quote: <input type="button" value="RFQ"/></p>	<p><b>MA2SV0100L</b></p> <p>Description: DIODE VARIABLE CAP 6V SSMINI-2P</p> <p>Manufacturers: Panasonic</p> <p>In Stock: New original, 5700 pcs Stock Available.</p> <p>Quote: <input type="button" value="RFQ"/></p>	<p><b>MA2SE0100L</b></p> <p>Description: DIODE SCHOTTKY 20V 35MA SSMINI2</p> <p>Manufacturers: Panasonic</p> <p>In Stock: New original, 2700 pcs Stock Available.</p> <p>Quote: <input type="button" value="RFQ"/></p>
<p><b>MA2SD3200L</b></p> <p>Description: DIODE SCHOTTKY 30V 200MA SSMINI2</p> <p>Manufacturers: Panasonic</p> <p>In Stock: New original, 204000 pcs Stock Available.</p> <p>Quote: <input type="button" value="RFQ"/></p>	<p><b>Panasonic</b></p> <p><b>MA2SV030P2TD</b></p> <p>Description: MA2SV030P2TD Panasonic SOD-523SS-Mini</p> <p>Manufacturers: Panasonic</p> <p>In Stock: New original, 122500 pcs Stock Available.</p> <p>Quote: <input type="button" value="RFQ"/></p>	<p><b>Panasonic</b></p> <p><b>MA2SP050GL+</b></p> <p>Description: MA2SP050GL+ Panasonic SOD-523</p> <p>Manufacturers: Panasonic</p> <p>In Stock: New original, 3200 pcs Stock Available.</p> <p>Quote: <input type="button" value="RFQ"/></p>
<p><b>MA2SP060GL</b></p> <p>Description: DIODE PIN 60V 100MA SSMINI-2P</p> <p>Manufacturers: Panasonic</p> <p>In Stock: New original, 18000 pcs Stock Available.</p> <p>Quote: <input type="button" value="RFQ"/></p>	<p><b>Panasonic</b></p> <p><b>MA2SV030P2LW</b></p> <p>Description: MA2SV030P2LW panasonic SOD-523</p> <p>Manufacturers: Panasonic</p> <p>In Stock: New original, 3000 pcs Stock Available.</p> <p>Quote: <input type="button" value="RFQ"/></p>	<p><b>Panasonic</b></p> <p><b>MA2SD32008SO</b></p> <p>Description: MA2SD32008SO Panasonic SOD-523SSMini2-F1060</p> <p>Manufacturers: Panasonic</p> <p>In Stock: New original, 19600 pcs Stock Available.</p> <p>Quote: <input type="button" value="RFQ"/></p>
<p><b>Panasonic</b></p> <p><b>MA2SV030Q2TD</b></p> <p>Description: MA2SV030Q2TD Panasonic SOD-523SS-Mini</p> <p>Manufacturers: Panasonic</p> <p>In Stock: New original, 24000 pcs Stock Available.</p> <p>Quote: <input type="button" value="RFQ"/></p>	<p><b>MA2SV0200L</b></p> <p>Description: DIODE VARIABLE CAP 6V SSMINI-2P</p> <p>Manufacturers: Panasonic</p> <p>In Stock: New original, 38900 pcs Stock Available.</p> <p>Quote: <input type="button" value="RFQ"/></p>	<p><b>MA2SD32008S</b></p> <p>Description: MA2SD32008S ROHM SOT-523</p> <p>Manufacturers: LAPIS Semiconductor</p> <p>In Stock: New original, 23800 pcs Stock Available.</p> <p>Quote: <input type="button" value="RFQ"/></p>
<p><b>Panasonic</b></p> <p><b>MA2SD320G8S0+</b></p> <p>Description: MA2SD320G8S0+ PANASONIC 07</p> <p>Manufacturers: Panasonic</p> <p>In Stock: New original, 8000 pcs Stock Available.</p> <p>Quote: <input type="button" value="RFQ"/></p>	<p><b>Panasonic</b></p> <p><b>MA2SV03002AL</b></p> <p>Description: MA2SV03002AL Panasonic SOD-523SS-Mini</p> <p>Manufacturers: Panasonic</p> <p>In Stock: New original, 100 pcs Stock Available.</p> <p>Quote: <input type="button" value="RFQ"/></p>	<p><b>Panasonic</b></p> <p><b>MA2SV040Q1TD</b></p> <p>Description: MA2SV040Q1TD panasonic SOD-523</p> <p>Manufacturers: Panasonic</p> <p>In Stock: New original, 9300 pcs Stock Available.</p> <p>Quote: <input type="button" value="RFQ"/></p>
<p><b>Panasonic</b></p> <p><b>MA2SV040P1TD</b></p> <p>Description: MA2SV040P1TD panasonic SOD-523</p> <p>Manufacturers: Panasonic</p> <p>In Stock: New original, 12200 pcs Stock Available.</p> <p>Quote: <input type="button" value="RFQ"/></p>	<p><b>MA2SV0300L</b></p> <p>Description: DIODE VARIABLE CAP 6V SSMINI-2P</p> <p>Manufacturers: Panasonic</p> <p>In Stock: New original, 5200 pcs Stock Available.</p> <p>Quote: <input type="button" value="RFQ"/></p>	<p><b>Panasonic</b></p> <p><b>MA2SD320GLBF</b></p> <p>Description: MA2SD320GLBF PANASONIC SOD523</p> <p>Manufacturers: Panasonic</p> <p>In Stock: New original, 31400 pcs Stock Available.</p> <p>Quote: <input type="button" value="RFQ"/></p>
<p><b>Panasonic</b></p> <p><b>MA2SV01001MC</b></p> <p>Description: MA2SV01001MC Panasonic SOD-523SS-Mini</p> <p>Manufacturers: Panasonic</p> <p>In Stock: New original, 300 pcs Stock Available.</p> <p>Quote: <input type="button" value="RFQ"/></p>	<p><b>Panasonic</b></p> <p><b>MA2SD320G8S0</b></p> <p>Description: MA2SD320G8S0 PANASONIC SOT523</p> <p>Manufacturers: Panasonic</p> <p>In Stock: New original, 32000 pcs Stock Available.</p> <p>Quote: <input type="button" value="RFQ"/></p>	<p><b>Panasonic</b></p> <p><b>MA2SD3200L+</b></p> <p>Description: MA2SD3200L+ PANASONIC SOD523</p> <p>Manufacturers: Panasonic</p> <p>In Stock: New original, 13000 pcs Stock Available.</p> <p>Quote: <input type="button" value="RFQ"/></p>
<p><b>Panasonic</b></p> <p><b>MA2SD320GL+</b></p> <p>Description: MA2SD320GL+ Panasonic SOD-523</p> <p>Manufacturers: Panasonic</p> <p>In Stock: New original, 111000 pcs Stock Available.</p> <p>Quote: <input type="button" value="RFQ"/></p>	<p><b>Panasonic</b></p> <p><b>MA2SV01001JN</b></p> <p>Description: MA2SV01001JN Panasonic SOD-523</p> <p>Manufacturers: Panasonic</p> <p>In Stock: New original, 2100 pcs Stock Available.</p> <p>Quote: <input type="button" value="RFQ"/></p>	<p><b>Panasonic</b></p> <p><b>MA2SD310GL+</b></p> <p>Description: MA2SD310GL+ PANASONIC SOD523</p> <p>Manufacturers: Panasonic</p> <p>In Stock: New original, 15000 pcs Stock Available.</p> <p>Quote: <input type="button" value="RFQ"/></p>



**IC Components Limited**  
WWW.IC-COMPONENTS.COM

Email: [Info@IC-Components.com](mailto:Info@IC-Components.com)  
TEL: 00 852 - 30501935  
FAX: 00 852 - 30501945

Address: 6H Block 1, Sherwood Court, Kingswood Villa, Tin Shui Wai, New Territories, Hong Kong