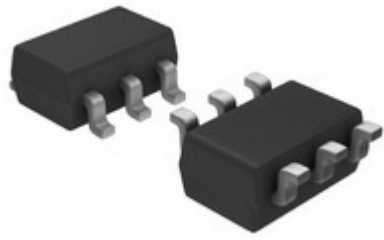




life.augmented



IC Components Limited

### STM6777SVWB6F

Manufacturer Part Number:	STM6777SVWB6F
Manufacturer / Brand:	STMicroelectronics
Part of Description:	IC SUPERVISOR DUAL/TRPL SOT23-6
Datasheets:	STM6777SVWB6F.pdf
Lead Free Status / RoHS Status:	Lead free / RoHS Compliant
Stock Condition:	New original, 100 pcs Stock Available.
Ship From:	Hong Kong
Shipment Way:	DHL/Fedex/TNT/UPS

[GET A QUOTE](#)

STM6777SVWB6F 100% New Original 100pcs in Stock, Find STM6777SVWB6F Price, Stock, datasheet at IC Components Ltd Online, buy STM6777SVWB6F STMicroelectronics with warrantied. 100% guarantee confidence. RFQ STM6777SVWB6F: [Info@IC-Components.com](mailto:Info@IC-Components.com)

### The specifications of STM6777SVWB6F

Part Number	STM6777SVWB6F	Manufacturer / Brand	STMicroelectronics
Series	-	Moisture Sensitivity Level (MSL)	3 (168 Hours)
Base Part Number	STM6777	Package / Case	SOT-23-6
Packaging	Tape & Reel (TR)	Mounting Type	Surface Mount
Supplier Device Package	SOT-23-6	Operating Temperature	-40°C ~ 85°C (TA)
Detailed Description	Supervisor Open Drain or Open Collector 2 Channel SOT-23-6	Type	Multi-Voltage Supervisor
Output	Open Drain or Open Collector	Reset	Active Low
Number of Voltages Monitored	2	Reset Timeout	140 ms Minimum
Voltage - Threshold	1.575V, 2.925V	Other Names	497-5247-2
Stock Quantity	100 pcs Stock	Category	Integrated Circuits (ICs) > PMIC - Supervisors
Description	IC SUPERVISOR DUAL/TRPL SOT23-6	Lead Free Status / RoHS Status	Lead free / RoHS Compliant

### Keywords related to STM6777SVWB6F

STMicroelectronics STM6777SVWB6F	STM6777SVWB6F part	STM6777SVWB6F Price	STM6777SVWB6F Distributor
STM6777SVWB6F Technical	STM6777SVWB6F Stock	STM6777SVWB6F Inventory	STM6777SVWB6F Supplier
STM6777SVWB6F Online Order	STM6777SVWB6F Inquiry	STM6777SVWB6F Image	STM6777SVWB6F Picture
STM6777SVWB6F pdf	STM6777SVWB6F datasheet	STM6777SVWB6F data sheet	STM6777SVWB6F pdf datasheet
Download STM6777SVWB6F datasheet	STMicroelectronics Manufacturer	STMicroelectronics STM6777SVWB6F	

### You May Be Also Be interested In:

<p><b>STM6778SFWB6F</b> Description: IC SUPERVISOR DUAL ECO SOT23-6 Manufacturers: STMicroelectronics In Stock: New original, 3000 pcs Stock Available. Quote: <input type="text" value="RFQ"/></p>	<p><b>STM6821MWY6F</b> Description: IC SUPERVISOR PB 4.39V SOT23-5 Manufacturers: STMicroelectronics In Stock: New original, 8100 pcs Stock Available. Quote: <input type="text" value="RFQ"/></p>	<p><b>STM6720SYWB6R</b> Description: IC SUPERVISOR ULV SOT23-6 Manufacturers: STMicroelectronics In Stock: New original, 6000 pcs Stock Available. Quote: <input type="text" value="RFQ"/></p>
<p><b>STM6719TZWB6F</b> Description: IC SUPERVISOR DUAL/TRPL SOT23-6 Manufacturers: STMicroelectronics In Stock: New original, 18000 pcs Stock Available. Quote: <input type="text" value="RFQ"/></p>	<p><b>STM6778SYWB6F</b> Description: IC SUPERVISOR DUAL/TRPL SOT23-6 Manufacturers: STMicroelectronics In Stock: New original, 6000 pcs Stock Available. Quote: <input type="text" value="RFQ"/></p>	<p>IMAGE NOT AVAILABLE</p> <p><b>STM6779YMB6F1</b> Description: STM6779YMB6F1 ST SOT23-5 Manufacturers: ST In Stock: New original, 400 pcs Stock Available. Quote: <input type="text" value="RFQ"/></p>
<p>IMAGE NOT AVAILABLE</p> <p><b>STM6720SY</b> Description: STM6720SY ST SOT23-6 Manufacturers: ST In Stock: New original, 7300 pcs Stock Available. Quote: <input type="text" value="RFQ"/></p>	<p><b>STM6720SYWB6F</b> Description: IC SUPERVISOR DUAL/TRPL SOT23-6 Manufacturers: STMicroelectronics In Stock: New original, 14700 pcs Stock Available. Quote: <input type="text" value="RFQ"/></p>	<p><b>STM6780LWB6F</b> Description: IC SUPERVISOR DUAL ECO SOT23-6 Manufacturers: STMicroelectronics In Stock: New original, 8600 pcs Stock Available. Quote: <input type="text" value="RFQ"/></p>
<p><b>STM6778SVWB6F</b> Description: IC SUPERVISOR DUAL ECO SOT23-6 Manufacturers: STMicroelectronics In Stock: New original, 200 pcs Stock Available. Quote: <input type="text" value="RFQ"/></p>	<p><b>STM6778TWWB6F</b> Description: IC SUPERVISOR DUAL ECO SOT23-6 Manufacturers: STMicroelectronics In Stock: New original, 200 pcs Stock Available. Quote: <input type="text" value="RFQ"/></p>	<p><b>STM6719SFBWB6R</b> Description: IC SUPERVISOR OPEN DRN SOT-23-6 Manufacturers: STMicroelectronics In Stock: New original, 62600 pcs Stock Available. Quote: <input type="text" value="RFQ"/></p>
<p>IMAGE NOT AVAILABLE</p> <p><b>STM6726</b> Description: STM6726 SAMHOP SOP-8 Manufacturers: SAMHOP In Stock: New original, 2600 pcs Stock Available. Quote: <input type="text" value="RFQ"/></p>	<p><b>STM6778TGWB6F</b> Description: IC SUPERVISOR DUAL ECO SOT23-6 Manufacturers: STMicroelectronics In Stock: New original, 68800 pcs Stock Available. Quote: <input type="text" value="RFQ"/></p>	<p><b>STM6780TWB6F</b> Description: IC SUPERVISOR DUAL ECO SOT23-6 Manufacturers: STMicroelectronics In Stock: New original, 3000 pcs Stock Available. Quote: <input type="text" value="RFQ"/></p>
<p><b>STM6720SVWB6F</b> Description: IC SUPERVISOR DUAL/TRPL SOT23-6 Manufacturers: STMicroelectronics In Stock: New original, 24000 pcs Stock Available. Quote: <input type="text" value="RFQ"/></p>	<p>IMAGE NOT AVAILABLE</p> <p><b>STM6719SH</b> Description: STM6719SH STM SOT23-6 Manufacturers: STM In Stock: New original, 300 pcs Stock Available. Quote: <input type="text" value="RFQ"/></p>	<p><b>STM6780SWB6F</b> Description: IC SUPERVISOR DUAL/TRPL SOT23-6 Manufacturers: STMicroelectronics In Stock: New original, 9000 pcs Stock Available. Quote: <input type="text" value="RFQ"/></p>
<p><b>STM6719TGWB6F</b> Description: IC SUPERVISOR DUAL/TRPL SOT23-6 Manufacturers: STMicroelectronics In Stock: New original, 5300 pcs Stock Available. Quote: <input type="text" value="RFQ"/></p>	<p><b>STM6720SFWB6F</b> Description: SUPERVISOR DUAL/TRPL PP SOT23-6 Manufacturers: STMicroelectronics In Stock: New original, 5700 pcs Stock Available. Quote: <input type="text" value="RFQ"/></p>	<p><b>STM6779VWB6F</b> Description: IC SUPERVISOR DUAL ECO SOT23-6 Manufacturers: STMicroelectronics In Stock: New original, 38900 pcs Stock Available. Quote: <input type="text" value="RFQ"/></p>
<p><b>STM6719SHWB6F</b> Description: SUPERVISOR DUAL/TRPL PP SOT23-6 Manufacturers: STMicroelectronics In Stock: New original, 2400 pcs Stock Available. Quote: <input type="text" value="RFQ"/></p>	<p>IMAGE NOT AVAILABLE</p> <p><b>STM6719SFBWB6R2</b> Description: STM6719SFBWB6R2 STM SOT23-6 Manufacturers: STM In Stock: New original, 500 pcs Stock Available. Quote: <input type="text" value="RFQ"/></p>	<p><b>STM6719SVWB6F</b> Description: IC SUPERVISOR DUAL/TRPL SOT23-6 Manufacturers: STMicroelectronics In Stock: New original, 2900 pcs Stock Available. Quote: <input type="text" value="RFQ"/></p>
<p><b>STM6719SFWB6F</b> Description: SUPERVISOR DUAL/TRPL PP SOT23-6 Manufacturers: STMicroelectronics In Stock: New original, 500 pcs Stock Available. Quote: <input type="text" value="RFQ"/></p>	<p><b>STM6777TWWB6F</b> Description: IC SUPERVISOR DUAL ECO SOT23-6 Manufacturers: STMicroelectronics In Stock: New original, 100 pcs Stock Available. Quote: <input type="text" value="RFQ"/></p>	<p><b>STM6821LWY6F</b> Description: IC SUPERVISOR TMR/RESET SOT23-5 Manufacturers: STMicroelectronics In Stock: New original, 30000 pcs Stock Available. Quote: <input type="text" value="RFQ"/></p>
<p><b>STM6719SYWB6F</b> Description: IC SUPERVISOR DUAL/TRPL SOT23-6 Manufacturers: STMicroelectronics In Stock: New original, 3000 pcs Stock Available. Quote: <input type="text" value="RFQ"/></p>	<p><b>STM6779YWB6F</b> Description: IC SUPERVISOR DUAL ECO SOT23-6 Manufacturers: STMicroelectronics In Stock: New original, 5000 pcs Stock Available. Quote: <input type="text" value="RFQ"/></p>	<p><b>STM6779SWB6F</b> Description: IC SUPERVISOR DUAL/TRPL SOT23-6 Manufacturers: STMicroelectronics In Stock: New original, 48000 pcs Stock Available. Quote: <input type="text" value="RFQ"/></p>



**IC Components Limited**  
WWW.IC-COMPONENTS.COM

Email: [Info@IC-Components.com](mailto:Info@IC-Components.com)  
TEL: 00 852 - 30501935  
FAX: 00 852 - 30501945

Address: 6H Block 1, Sherwood Court, Kingswood Villa, Tin Shui Wai, New Territories, Hong Kong