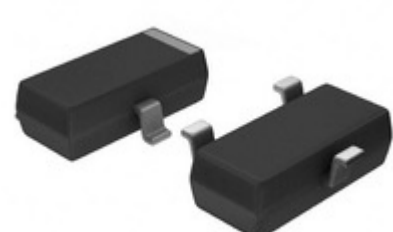


Panasonic



IC Components Limited

AN48820A-NL

Manufacturer Part Number:	AN48820A-NL
Manufacturer / Brand	Panasonic
Part of Description:	MAGNETIC SWITCH OMNIPOLAR MINI-3
Datasheets:	AN48820A-NL.pdf
Lead Free Status / RoHS Status:	Lead free / RoHS Compliant
Stock Condition:	New original, 42400 pcs Stock Available.
Ship From:	Hong Kong
Shipment Way:	DHL/Fedex/TNT/UPS

[GET A QUOTE](#)

AN48820A-NL 100% New Original 42400pcs in Stock, Find AN48820A-NL Price, Stock, datasheet at IC Components Ltd Online, buy AN48820A-NL Panasonic with warrantied. 100% guarantee confidence. RFQ AN48820A-NL: Info@IC-Components.com

The specifications of AN48820A-NL

Part Number	AN48820A-NL	Manufacturer / Brand	Panasonic
Series	-	Moisture Sensitivity Level (MSL)	2 (1 Year)
Package / Case	TO-236-3, SC-59, SOT-23-3	Packaging	Tape & Reel (TR)
Supplier Device Package	MINI-3DRA	Operating Temperature	-25°C ~ 75°C (TA)
Detailed Description	Digital Switch Omnipolar Switch Open Drain Hall Effect MINI-3DRA	Technology	Hall Effect
Output Type	Open Drain	Features	-
Polarization	Either	Voltage - Supply	2.5 V ~ 3.5 V
Function	Omnipolar Switch	Current - Supply (Max)	3.5µA (Typ)
Sensing Range	±6mT Trip, ±0.5mT Release	Test Condition	25°C
Current - Output (Max)	15mA	Other Names	AN48820A-NLTR
Stock Quantity	42400 pcs Stock	Category	Sensors, Transducers > Magnetic Sensors - Switches (Solid State)
Description	MAGNETIC SWITCH OMNIPOLAR MINI-3	Lead Free Status / RoHS Status	Lead free / RoHS Compliant

Keywords realted to AN48820A-NL

Panasonic AN48820A-NL	AN48820A-NL part	AN48820A-NL Price	AN48820A-NL Distributor
AN48820A-NL Technical	AN48820A-NL Stock	AN48820A-NL Inventory	AN48820A-NL Supplier
AN48820A-NL Online Order	AN48820A-NL Inquiry	AN48820A-NL Image	AN48820A-NL Picture
AN48820A-NL.pdf	AN48820A-NL datasheet	AN48820A-NL data sheet	AN48820A-NL.pdf datasheet
Download AN48820A-NL datasheet	Panasonic Manufacturer	Panasonic AN48820A-NL	Panasonic - Consumer Division AN48820A-NL
Panasonic - Consumer Electronics Corp. AN48820A-NL	Panasonic Battery Group AN48820A-NL	Panasonic Electric Works - ACSD AN48820A-NL	Panasonic Electronic Components - Semiconductor Pr AN48820A-NL
Panasonic - ATG AN48820A-NL	Panasonic - BSG AN48820A-NL	Panasonic - DTG AN48820A-NL	Panasonic Electric Works AN48820A-NL
Panasonic Electronic Components AN48820A-NL	Panasonic Industrial Automation Sales AN48820A-NL	Panasonic Semiconductor AN48820A-NL	

You May Be Also Be interested In:

<p>Panasonic</p> <p>AN44050A Description: AN44050A PANASONIC SSOP32 Manufacturers: Panasonic In Stock: New original, 2000 pcs Stock Available.</p> <p>Quote: <input type="text"/> RFQ</p>	<p>Panasonic</p> <p>AN44063A-VF Description: IC MOTOR DRIVER PAR 32SSOP Manufacturers: Panasonic In Stock: New original, 2000 pcs Stock Available.</p> <p>Quote: <input type="text"/> RFQ</p>	<p>Panasonic</p> <p>AN431BN-ATRG1 Description: IC VREF SHUNT ADJ SOT23-3 Manufacturers: Diodes Incorporated In Stock: New original, 108900 pcs Stock Available.</p> <p>Quote: <input type="text"/> RFQ</p>
<p>Panasonic</p> <p>AN48810B Description: AN48810B PANASONIC SOT353 Manufacturers: Panasonic In Stock: New original, 6000 pcs Stock Available.</p> <p>Quote: <input type="text"/> RFQ</p>	<p>Panasonic</p> <p>AN431BN-ATRE1 Description: IC VREF SHUNT ADJ SOT23-3 Manufacturers: Diodes Incorporated In Stock: New original, 10100 pcs Stock Available.</p> <p>Quote: <input type="text"/> RFQ</p>	<p>DIODES</p> <p>AN44030A-VF Description: AN44030A-VF PANASONI SSOP Manufacturers: PANASONI In Stock: New original, 400 pcs Stock Available.</p> <p>Quote: <input type="text"/> RFQ</p>
<p>Panasonic</p> <p>AN44066A-VF Description: IC MOTOR DRIVER PAR 32SSOP Manufacturers: Panasonic In Stock: New original, 1600 pcs Stock Available.</p> <p>Quote: <input type="text"/> RFQ</p>	<p>Panasonic</p> <p>AN48810B-NL Description: MAGNETIC SWITCH UNIPOLAR SMINI-5 Manufacturers: Panasonic In Stock: New original, 15000 pcs Stock Available.</p> <p>Quote: <input type="text"/> RFQ</p>	<p>Panasonic</p> <p>AN44067A-VF Description: IC MOTOR DRIVER PAR 34HSOP Manufacturers: Panasonic In Stock: New original, 2900 pcs Stock Available.</p> <p>Quote: <input type="text"/> RFQ</p>
<p>Panasonic</p> <p>AN48800A Description: AN48800A Panasonic SOT-23 Manufacturers: Panasonic In Stock: New original, 12000 pcs Stock Available.</p> <p>Quote: <input type="text"/> RFQ</p>	<p>Panasonic</p> <p>AN48800AENL Description: AN48800AENL PANASONIC SOT-23 Manufacturers: Panasonic In Stock: New original, 12000 pcs Stock Available.</p> <p>Quote: <input type="text"/> RFQ</p>	<p>Panasonic</p> <p>AN44062A Description: AN44062A PANASONIC HSOP Manufacturers: Panasonic In Stock: New original, 1400 pcs Stock Available.</p> <p>Quote: <input type="text"/> RFQ</p>
<p>DIODES</p> <p>AN431AN-ATRG1/ATRE1 Description: AN431AN-ATRG1/ATRE1 DIODES SOT23 Manufacturers: Diodes Incorporated In Stock: New original, 5600 pcs Stock Available.</p> <p>Quote: <input type="text"/> RFQ</p>	<p>Panasonic</p> <p>AN431AN-ATRG1 Description: IC VREF SHUNT ADJ SOT23-3 Manufacturers: Diodes Incorporated In Stock: New original, 105000 pcs Stock Available.</p> <p>Quote: <input type="text"/> RFQ</p>	<p>Panasonic</p> <p>AN44140A-VB+ Description: AN44140A-VB+ PANASONIC QFN Manufacturers: Panasonic In Stock: New original, 5500 pcs Stock Available.</p> <p>Quote: <input type="text"/> RFQ</p>
<p>Panasonic</p> <p>AN431T Description: AN431T PANASONIC TO-92 Manufacturers: Panasonic In Stock: New original, 300 pcs Stock Available.</p> <p>Quote: <input type="text"/> RFQ</p>	<p>Panasonic</p> <p>AN48841B-NL Description: MAGNET SWITCH BIPOLAR SMINI-5DE Manufacturers: Panasonic In Stock: New original, 213000 pcs Stock Available.</p> <p>Quote: <input type="text"/> RFQ</p>	<p>DIODES</p> <p>AN431BN Description: AN431BN BCD SOT23-3 Manufacturers: BCD In Stock: New original, 3000 pcs Stock Available.</p> <p>Quote: <input type="text"/> RFQ</p>
<p>Panasonic</p> <p>AN48840B-NL Description: MAGNET SWITCH BIPOLAR SMINI-5DA Manufacturers: Panasonic In Stock: New original, 800 pcs Stock Available.</p> <p>Quote: <input type="text"/> RFQ</p>	<p>DIODES</p> <p>AN44062A-VF Description: AN44062A-VF PANASON SSOP Manufacturers: PANASON In Stock: New original, 800 pcs Stock Available.</p> <p>Quote: <input type="text"/> RFQ</p>	<p>Panasonic</p> <p>AN44065A-VF Description: IC MOTOR DRIVER PAR SMD Manufacturers: Panasonic In Stock: New original, 70900 pcs Stock Available.</p> <p>Quote: <input type="text"/> RFQ</p>
<p>Panasonic</p> <p>AN48841B-NL SOT23-5 Description: AN48841B-NL SOT23-5 PANASONIC SOT553 Manufacturers: Panasonic In Stock: New original, 3100 pcs Stock Available.</p> <p>Quote: <input type="text"/> RFQ</p>	<p>Panasonic</p> <p>AN44071A-VF Description: IC MOTOR DRIVER PAR 56HSOP Manufacturers: Panasonic In Stock: New original, 100 pcs Stock Available.</p> <p>Quote: <input type="text"/> RFQ</p>	<p>Panasonic</p> <p>AN44060A-VF Description: AN44060A-VF PANASONIC SOP Manufacturers: Panasonic In Stock: New original, 4500 pcs Stock Available.</p> <p>Quote: <input type="text"/> RFQ</p>
<p>Panasonic</p> <p>AN48820A-NL+ Description: AN48820A-NL+ PANASONIC SOT23 Manufacturers: Panasonic In Stock: New original, 11200 pcs Stock Available.</p> <p>Quote: <input type="text"/> RFQ</p>	<p>Panasonic</p> <p>AN48820A_NL Description: AN48820A_NL Panasonic SOT-23 Manufacturers: Panasonic In Stock: New original, 1000 pcs Stock Available.</p> <p>Quote: <input type="text"/> RFQ</p>	<p>Panasonic</p> <p>AN48841B-NL+ Description: AN48841B-NL+ Panasonic SC70-5 Manufacturers: Panasonic In Stock: New original, 13000 pcs Stock Available.</p> <p>Quote: <input type="text"/> RFQ</p>
<p>Panasonic</p> <p>AN48800A-NL Description: MAGNETIC SWITCH UNIPOLAR MINI-3 Manufacturers: Panasonic In Stock: New original, 3000 pcs Stock Available.</p> <p>Quote: <input type="text"/> RFQ</p>	<p>Panasonic</p> <p>AN48840B Description: AN48840B PANASONIC BGA Manufacturers: Panasonic In Stock: New original, 3000 pcs Stock Available.</p> <p>Quote: <input type="text"/> RFQ</p>	<p>DIODES</p> <p>AN431BN-ATR Description: AN431BN-ATR BCD SOT23 Manufacturers: BCD In Stock: New original, 3500 pcs Stock Available.</p> <p>Quote: <input type="text"/> RFQ</p>



IC Components Limited
WWW.IC-COMPONENTS.COM

Email: Info@IC-Components.com
TEL: 00 852 - 30501935
FAX: 00 852 - 30501945

Address: 6H Block 1, Sherwood Court, Kingswood Villa, Tin Shui Wai, New Territories, Hong Kong