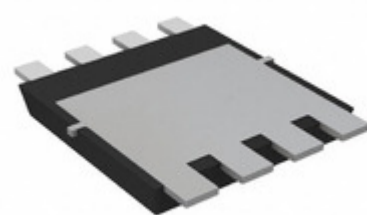


**TOSHIBA**  
Leading Innovation >>>



IC Components Limited

**TPW4R50ANH,L1Q**

Manufacturer Part Number: [TPW4R50ANH,L1Q](#)  
 Manufacturer / Brand: [Toshiba Semiconductor and Storage](#)  
 Part of Description: [MOSFET N-CH 100V 92A 8DSOP](#)  
 Datasheets: [TPW4R50ANH,L1Q.pdf](#)  
 Lead Free Status / RoHS Status: Lead free / RoHS Compliant  
 Stock Condition: New original, 50000 pcs Stock Available.  
 Ship From: Hong Kong  
 Shipment Way: DHL/Fedex/TNT/UPS

[GET A QUOTE](#)

**TPW4R50ANH,L1Q** 100% New Original 50000pcs in Stock, Find TPW4R50ANH,L1Q Price, Stock, datasheet at IC Components Ltd Online, buy TPW4R50ANH,L1Q Toshiba Semiconductor and Storage with warrantied. 100% guarantee confidence. RFQ TPW4R50ANH,L1Q: [Info@IC-Components.com](mailto:Info@IC-Components.com)

The specifications of TPW4R50ANH,L1Q

Part Number	<a href="#">TPW4R50ANH,L1Q</a>	Manufacturer / Brand	<a href="#">Toshiba Semiconductor and Storage</a>
Vgs(th) (Max) @ Id	4V @ 1mA	Vgs (Max)	±20V
Technology	MOSFET (Metal Oxide)	Supplier Device Package	8-DSOP Advance
Series	U-MOSVIII-H	Rds On (Max) @ Id, Vgs	4.5 mOhm @ 46A, 10V
Power Dissipation (Max)	800mW (Ta), 142W (Tc)	Packaging	Original-Reel®
Package / Case	8-PowerVDFN	Other Names	TPW4R50ANH,L1QDKR
Operating Temperature	150°C (TJ)	Mounting Type	Surface Mount
Moisture Sensitivity Level (MSL)	1 (Unlimited)	Input Capacitance (Ciss) (Max) @ Vds	5200pF @ 50V
Gate Charge (Qg) (Max) @ Vgs	58nC @ 10V	FET Type	N-Channel
FET Feature	-	Drive Voltage (Max Rds On, Min Rds On)	10V
Drain to Source Voltage (Vdss)	100V	Detailed Description	N-Channel 100V 92A (Tc) 800mW (Ta), 142W (Tc) Surface Mount 8-DSOP Advance
Current - Continuous Drain (Id) @ 25°C	92A (Tc)	Stock Quantity	50000 pcs Stock
Category	<a href="#">Discrete Semiconductor Products</a> > <a href="#">Transistors - FETs, MOSFETs - Single</a>	Description	MOSFET N-CH 100V 92A 8DSOP
Lead Free Status / RoHS Status	Lead free / RoHS Compliant		

Keywords realted to TPW4R50ANH,L1Q

<a href="#">Toshiba Semiconductor and Storage TPW4R50ANH,L1Q</a>	<a href="#">TPW4R50ANH,L1Q part</a>	<a href="#">TPW4R50ANH,L1Q Price</a>	<a href="#">TPW4R50ANH,L1Q Distributor</a>
<a href="#">TPW4R50ANH,L1Q Technical</a>	<a href="#">TPW4R50ANH,L1Q Stock</a>	<a href="#">TPW4R50ANH,L1Q Inventory</a>	<a href="#">TPW4R50ANH,L1Q Supplier</a>
<a href="#">TPW4R50ANH,L1Q Online Order</a>	<a href="#">TPW4R50ANH,L1Q Inquiry</a>	<a href="#">TPW4R50ANH,L1Q Image</a>	<a href="#">TPW4R50ANH,L1Q Picture</a>
<a href="#">TPW4R50ANH,L1Q pdf</a>	<a href="#">TPW4R50ANH,L1Q datasheet</a>	<a href="#">TPW4R50ANH,L1Q data sheet</a>	<a href="#">TPW4R50ANH,L1Q pdf datasheet</a>
<a href="#">Download TPW4R50ANH,L1Q datasheet</a>	<a href="#">Toshiba Semiconductor and Storage Manufacturer</a>	<a href="#">Toshiba Semiconductor and Storage TPW4R50ANH,L1Q</a>	<a href="#">Toshiba TPW4R50ANH,L1Q</a>

You May Be Also Be interested In:

<p><b>TPWCC04BS-TC10</b>                  Description: TPWCC04BS-TC10 MUATA SMD                  Manufacturers: MUATA                  In Stock: New original, 9000 pcs Stock Available.                  Quote: <input type="text"/> RFQ</p>	<p><b>TPW1R006PL</b>                  Description: TOSHIBA QFN8                  Manufacturers: TOSHIBA                  In Stock: New original, 8955 pcs Stock Available.                  Quote: <input type="text"/> RFQ</p>	<p><b>TPW1R306PL</b>                  Description: TOSHIBA QFN8                  Manufacturers: TOSHIBA                  In Stock: New original, 8977 pcs Stock Available.                  Quote: <input type="text"/> RFQ</p>
<p><b>TPW5200FNH</b>                  Description: TOSHIBA QFN8                  Manufacturers: TOSHIBA                  In Stock: New original, 7893 pcs Stock Available.                  Quote: <input type="text"/> RFQ</p>	<p><b>TPWR6004PL</b>                  Description: TOSHIBA QFN8                  Manufacturers: TOSHIBA                  In Stock: New original, 9840 pcs Stock Available.                  Quote: <input type="text"/> RFQ</p>	<p><b>TPW60R080CFD</b>                  Description: TO-247 18+                  Manufacturers:                  In Stock: New original, 61460 pcs Stock Available.                  Quote: <input type="text"/> RFQ</p>
<p><b>TPW2900ENH</b>                  Description: TOSHIBA QFN8                  Manufacturers: TOSHIBA                  In Stock: New original, 8966 pcs Stock Available.                  Quote: <input type="text"/> RFQ</p>	<p><b>CSD18535KCS</b>                  Description: MOSFET N-CH 60V 200A TO-220-3                  Manufacturers: N/A                  In Stock: New original, 17500 pcs Stock Available.                  Quote: <input type="text"/> RFQ</p>	<p><b>TPWR8503NL,L1Q</b>                  Description: MOSFET N-CH 30V 150A 8DSOP                  Manufacturers: Toshiba Semiconductor and Storage                  In Stock: New original, 50000 pcs Stock Available.                  Quote: <input type="text"/> RFQ</p>
<p><b>IRFR3709Z</b>                  Description: MOSFET N-CH 30V 86A DPAK                  Manufacturers: International Rectifier (Infineon Technologies)                  In Stock: New original, 6000 pcs Stock Available.                  Quote: <input type="text"/> RFQ</p>	<p><b>IRLB3034PBF</b>                  Description: MOSFET N-CH 40V 195A TO220AB                  Manufacturers: International Rectifier (Infineon Technologies)                  In Stock: New original, 2810 pcs Stock Available.                  Quote: <input type="text"/> RFQ</p>	<p><b>TPW5200FNH,L1Q</b>                  Description: TOSHIBA SOP8                  Manufacturers: TOSHIBA                  In Stock: New original, 4100 pcs Stock Available.                  Quote: <input type="text"/> RFQ</p>
<p><b>TPW4R008NH</b>                  Description: TPW4R008NH TOSHIBA SOP8                  Manufacturers: TOSHIBA                  In Stock: New original, 2621 pcs Stock Available.                  Quote: <input type="text"/> RFQ</p>	<p><b>TPWR8503NL</b>                  Description: TPWR8503NL TOSHIBA SOP8                  Manufacturers: TOSHIBA                  In Stock: New original, 2651 pcs Stock Available.                  Quote: <input type="text"/> RFQ</p>	<p><b>STN2NF10</b>                  Description: MOSFET N-CH 100V 2.4A SOT-223                  Manufacturers: STMicroelectronics                  In Stock: New original, 83400 pcs Stock Available.                  Quote: <input type="text"/> RFQ</p>
<p><b>STF23NM50N</b>                  Description: MOSFET N-CH 500V 17A TO-220FP                  Manufacturers: STMicroelectronics                  In Stock: New original, 2795 pcs Stock Available.                  Quote: <input type="text"/> RFQ</p>	<p><b>IRFS3607TRLPBF</b>                  Description: MOSFET N-CH 75V 80A D2PAK                  Manufacturers: International Rectifier (Infineon Technologies)                  In Stock: New original, 6000 pcs Stock Available.                  Quote: <input type="text"/> RFQ</p>	<p><b>AOD2N60</b>                  Description: MOSFET N-CH 600V 2A TO252                  Manufacturers: Alpha and Omega Semiconductor, Inc.                  In Stock: New original, 32400 pcs Stock Available.                  Quote: <input type="text"/> RFQ</p>
<p><b>TPW4R008NH,L1Q</b>                  Description: MOSFET N-CH 80V 116A 8DSOP                  Manufacturers: Toshiba Semiconductor and Storage                  In Stock: New original, 2795 pcs Stock Available.                  Quote: <input type="text"/> RFQ</p>	<p><b>TPWR6003PL</b>                  Description: TOSHIBA QFN8                  Manufacturers: TOSHIBA                  In Stock: New original, 9810 pcs Stock Available.                  Quote: <input type="text"/> RFQ</p>	<p><b>TPWR8004PL</b>                  Description: TPWR8004PL TOSHIBA SOP8                  Manufacturers: TOSHIBA                  In Stock: New original, 2715 pcs Stock Available.                  Quote: <input type="text"/> RFQ</p>
<p><b>TPW2R508NH,L1Q</b>                  Description: TOSHIBA SOP8                  Manufacturers: TOSHIBA                  In Stock: New original, 18000 pcs Stock Available.                  Quote: <input type="text"/> RFQ</p>	<p><b>FQI3N90TU</b>                  Description: MOSFET N-CH 900V 3.6A I2PAK                  Manufacturers: AMI Semiconductor / ON Semiconductor                  In Stock: New original, 2693 pcs Stock Available.                  Quote: <input type="text"/> RFQ</p>	<p><b>TPW1R104PB</b>                  Description: TOSHIBA QFN8                  Manufacturers: TOSHIBA                  In Stock: New original, 9800 pcs Stock Available.                  Quote: <input type="text"/> RFQ</p>
<p><b>TPWR7904PB</b>                  Description: TOSHIBA QFN8                  Manufacturers: TOSHIBA                  In Stock: New original, 9540 pcs Stock Available.                  Quote: <input type="text"/> RFQ</p>	<p><b>TPW1500CNH</b>                  Description: TOSHIBA SOP8                  Manufacturers: TOSHIBA                  In Stock: New original, 2852 pcs Stock Available.                  Quote: <input type="text"/> RFQ</p>	<p><b>TPW1500CNH,L1Q</b>                  Description: TOSHIBA SOP8                  Manufacturers: TOSHIBA                  In Stock: New original, 14700 pcs Stock Available.                  Quote: <input type="text"/> RFQ</p>
<p><b>TPW4R50ANH</b>                  Description: TPW4R50ANH TOSHIBA SOP8                  Manufacturers: TOSHIBA                  In Stock: New original, 2876 pcs Stock Available.                  Quote: <input type="text"/> RFQ</p>	<p><b>NTD4804NT4G</b>                  Description: MOSFET N-CH 30V 14.5A DPAK                  Manufacturers: AMI Semiconductor / ON Semiconductor                  In Stock: New original, 50000 pcs Stock Available.                  Quote: <input type="text"/> RFQ</p>	<p><b>FQD1N60CTF</b>                  Description: MOSFET N-CH 600V 1A DPAK                  Manufacturers: AMI Semiconductor / ON Semiconductor                  In Stock: New original, 5000 pcs Stock Available.                  Quote: <input type="text"/> RFQ</p>



**IC Components Limited**  
WWW.IC-COMPONENTS.COM

Email: [Info@IC-Components.com](mailto:Info@IC-Components.com)  
 TEL: 00 852 - 30501935  
 FAX: 00 852 - 30501945

Address: 6H Block 1, Sherwood Court, Kingswood Villa, Tin Shui Wai, New Territories, Hong Kong