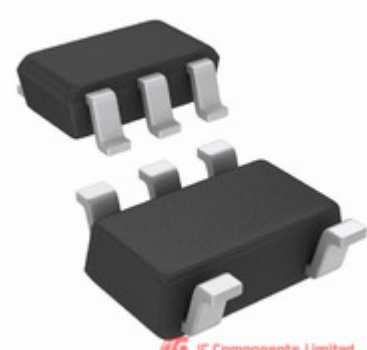




life.augmented



STM6822RWY6F

Manufacturer Part Number:	STM6822RWY6F
Manufacturer / Brand	ST
Part of Description:	
Datasheets:	STM6822RWY6F.pdf
Lead Free Status / RoHS Status:	
Stock Condition:	New original, 5000 pcs Stock Available.
Ship From:	Hong Kong
Shipment Way:	DHL/Fedex/TNT/UPS

[GET A QUOTE](#)

STM6822RWY6F 100% New Original 5000pcs in Stock, Find STM6822RWY6F Price, Stock, datasheet at IC Components Ltd Online, buy STM6822RWY6F STMicroelectronics with warrantied. 100% guarantee confidence. RFQ STM6822RWY6F: Info@IC-Components.com

The specifications of STM6822RWY6F

Part Number	STM6822RWY6F	Manufacturer / Brand	ST
Voltage - Threshold	2.63V	Type	Simple Reset/Power-On Reset
Supplier Device Package	SOT-23-5	Series	-
Reset Timeout	140 ms Minimum	Reset	Active Low
Packaging	Tape & Reel (TR)	Package / Case	SC-74A, SOT-753
Output	Open Drain or Open Collector	Other Names	497-4665-2
Operating Temperature	-40°C ~ 85°C (TA)	Number of Voltages Monitored	1
Mounting Type	Surface Mount	Moisture Sensitivity Level (MSL)	1 (Unlimited)
Detailed Description	Supervisor Open Drain or Open Collector 1 Channel SOT-23-5	Base Part Number	STM6822
Stock Quantity	5000 pcs Stock	Category	Integrated Circuits (ICs) > Specialized ICs
Description	Lead Free Status / RoHS Status		

Keywords realted to STM6822RWY6F

STMicroelectronics STM6822RWY6F	STM6822RWY6F part	STM6822RWY6F Price	STM6822RWY6F Distributor
STM6822RWY6F Technical	STM6822RWY6F Stock	STM6822RWY6F Inventory	STM6822RWY6F Supplier
STM6822RWY6F Online Order	STM6822RWY6F Inquiry	STM6822RWY6F Image	STM6822RWY6F Picture
STM6822RWY6F pdf	STM6822RWY6F datasheet	STM6822RWY6F data sheet	STM6822RWY6F pdf datasheet
Download STM6822RWY6F datasheet	STMicroelectronics Manufacturer	STMicroelectronics STM6822RWY6F	

You May Be Also Be interested In:

<p>STM6822LWY6F Description: IC SUPERVISOR PB RESET SOT23-5 Manufacturers: STMicroelectronics In Stock: New original, 3100 pcs Stock Available. Quote: <input type="text"/> <input type="button" value="RFQ"/></p>	<p>STM6823LWY6F Description: IC SUPERVISOR TMR/RESET SOT23-5 Manufacturers: STMicroelectronics In Stock: New original, 3100 pcs Stock Available. Quote: <input type="text"/> <input type="button" value="RFQ"/></p>	<p>STM6823RWY6F Description: IC SUPERVISOR TIMR/RESET SOT23-5 Manufacturers: STMicroelectronics In Stock: New original, 23000 pcs Stock Available. Quote: <input type="text"/> <input type="button" value="RFQ"/></p>
<p>STM6821LWY6F Description: IC SUPERVISOR TIMR/RESET SOT23-5 Manufacturers: STMicroelectronics In Stock: New original, 30000 pcs Stock Available. Quote: <input type="text"/> <input type="button" value="RFQ"/></p>	<p>STM6822YWY6F Description: IC SUPERVISOR PB/OPEN DR. SOT23-5 Manufacturers: STMicroelectronics In Stock: New original, 10400 pcs Stock Available. Quote: <input type="text"/> <input type="button" value="RFQ"/></p>	<p>STM6779SWB6F Description: IC SUPERVISOR DUAL/TRPL SOT23-6 Manufacturers: STMicroelectronics In Stock: New original, 48000 pcs Stock Available. Quote: <input type="text"/> <input type="button" value="RFQ"/></p>
<p>STM6778TGWB6F Description: IC SUPERVISOR DUAL ECO SOT23-6 Manufacturers: STMicroelectronics In Stock: New original, 68800 pcs Stock Available. Quote: <input type="text"/> <input type="button" value="RFQ"/></p>	<p>STM6822ZWY6F Description: IC SUPERVISOR PB/OPEN DR. SOT23-5 Manufacturers: STMicroelectronics In Stock: New original, 2778 pcs Stock Available. Quote: <input type="text"/> <input type="button" value="RFQ"/></p>	<p>STM6822MWY6F Description: IC SUPERVISOR TIMR/RESET SOT23-5 Manufacturers: STMicroelectronics In Stock: New original, 51900 pcs Stock Available. Quote: <input type="text"/> <input type="button" value="RFQ"/></p>
<p>IMAGE NOT AVAILABLE</p> <p>STM6779YMB6F1 Description: STM6779YMB6F1 ST SOT23-5 Manufacturers: ST In Stock: New original, 2854 pcs Stock Available. Quote: <input type="text"/> <input type="button" value="RFQ"/></p>	<p>STM6823ZYWY6F Description: IC SUPERVISOR TIMER/RST SOT23-5 Manufacturers: STMicroelectronics In Stock: New original, 3100 pcs Stock Available. Quote: <input type="text"/> <input type="button" value="RFQ"/></p>	<p>STM6780SWB6F Description: IC SUPERVISOR DUAL/TRPL SOT23-6 Manufacturers: STMicroelectronics In Stock: New original, 9000 pcs Stock Available. Quote: <input type="text"/> <input type="button" value="RFQ"/></p>
<p>STM6821RWY6F Description: IC SUPERVISOR TIMR/RESET SOT23-5 Manufacturers: STMicroelectronics In Stock: New original, 6400 pcs Stock Available. Quote: <input type="text"/> <input type="button" value="RFQ"/></p>	<p>STM6778TWWB6F Description: IC SUPERVISOR DUAL ECO SOT23-6 Manufacturers: STMicroelectronics In Stock: New original, 2896 pcs Stock Available. Quote: <input type="text"/> <input type="button" value="RFQ"/></p>	<p>STM6779YWY6F Description: IC SUPERVISOR DUAL ECO SOT23-6 Manufacturers: STMicroelectronics In Stock: New original, 5000 pcs Stock Available. Quote: <input type="text"/> <input type="button" value="RFQ"/></p>
<p>STM6780TWWB6F Description: IC SUPERVISOR DUAL ECO SOT23-6 Manufacturers: STMicroelectronics In Stock: New original, 3000 pcs Stock Available. Quote: <input type="text"/> <input type="button" value="RFQ"/></p>	<p>STM6821MWY6F Description: IC SUPERVISOR PB 4.39V SOT23-5 Manufacturers: STMicroelectronics In Stock: New original, 8100 pcs Stock Available. Quote: <input type="text"/> <input type="button" value="RFQ"/></p>	<p>STM6823TWY6F Description: SUPERVISOR 3.080V PP SOT23-5 Manufacturers: STMicroelectronics In Stock: New original, 4000 pcs Stock Available. Quote: <input type="text"/> <input type="button" value="RFQ"/></p>
<p>STM6780LWB6F Description: IC SUPERVISOR DUAL ECO SOT23-6 Manufacturers: STMicroelectronics In Stock: New original, 8600 pcs Stock Available. Quote: <input type="text"/> <input type="button" value="RFQ"/></p>	<p>IMAGE NOT AVAILABLE</p> <p>STM6823TJWY6F TEL:88834448 Description: STM6823TJWY6F TEL:88834448 ST SOT23-5 Manufacturers: ST In Stock: New original, 73000 pcs Stock Available. Quote: <input type="text"/> <input type="button" value="RFQ"/></p>	<p>IMAGE NOT AVAILABLE</p> <p>STM6822TWY6 Description: Manufacturers: In Stock: New original, 2797 pcs Stock Available. Quote: <input type="text"/> <input type="button" value="RFQ"/></p>
<p>STM6824LWY6F Description: IC SUPERVISOR PB 4.63V SOT23-5 Manufacturers: STMicroelectronics In Stock: New original, 3100 pcs Stock Available. Quote: <input type="text"/> <input type="button" value="RFQ"/></p>	<p>IMAGE NOT AVAILABLE</p> <p>STM6823SJWY6F Description: STM6823SJWY6F ST SOT23-5 Manufacturers: ST In Stock: New original, 13000 pcs Stock Available. Quote: <input type="text"/> <input type="button" value="RFQ"/></p>	<p>STM6821SWY6F Description: IC SUPERVISOR PB 2.93V SOT23-5 Manufacturers: STMicroelectronics In Stock: New original, 3000 pcs Stock Available. Quote: <input type="text"/> <input type="button" value="RFQ"/></p>
<p>STM6823MWY6F Description: IC SUPERVISOR PB 4.39V SOT23-5 Manufacturers: STMicroelectronics In Stock: New original, 33000 pcs Stock Available. Quote: <input type="text"/> <input type="button" value="RFQ"/></p>	<p>STM6823TJWY6F Description: IC SUPERVISOR TIMR/RESET SOT23-5 Manufacturers: STMicroelectronics In Stock: New original, 3000 pcs Stock Available. Quote: <input type="text"/> <input type="button" value="RFQ"/></p>	<p>STM6822TWY6F Description: IC SUPERVISOR PB RESET SOT23-5 Manufacturers: STMicroelectronics In Stock: New original, 7900 pcs Stock Available. Quote: <input type="text"/> <input type="button" value="RFQ"/></p>
<p>STM6823SWY6F Description: IC SUPERVISOR PB 2.93V SOT23-5 Manufacturers: STMicroelectronics In Stock: New original, 6000 pcs Stock Available. Quote: <input type="text"/> <input type="button" value="RFQ"/></p>	<p>STM6779VWB6F Description: IC SUPERVISOR DUAL ECO SOT23-6 Manufacturers: STMicroelectronics In Stock: New original, 38900 pcs Stock Available. Quote: <input type="text"/> <input type="button" value="RFQ"/></p>	<p>STM6822SWY6F Description: IC SUPERVISOR PB 2.93V SOT23-5 Manufacturers: STMicroelectronics In Stock: New original, 30000 pcs Stock Available. Quote: <input type="text"/> <input type="button" value="RFQ"/></p>



IC Components Limited
WWW.IC-COMPONENTS.COM

Email: Info@IC-Components.com
TEL: 00 852 - 30501935
FAX: 00 852 - 30501945

Address: 6H Block 1, Sherwood Court, Kingswood Villa, Tin Shui Wai, New Territories, Hong Kong