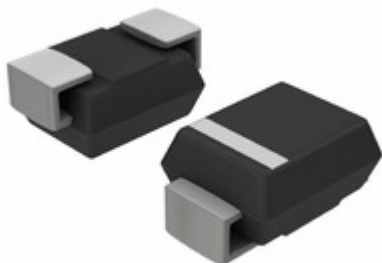


BOURNS®



IC Components Limited

1.5SMC150A

Manufacturer Part Number:	1.5SMC150A
Manufacturer / Brand	Bourns, Inc.
Part of Description:	TVS DIODE 128V 207V DO214AB
Datasheets:	1.5SMC150A.pdf
Lead Free Status / RoHS Status:	Lead free / RoHS Compliant
Stock Condition:	New original, 9000 pcs Stock Available.
Ship From:	Hong Kong
Shipment Way:	DHL/Fedex/TNT/UPS

GET A QUOTE

1.5SMC150A 100% New Original 9000pcs in Stock, Find 1.5SMC150A Price, Stock, datasheet at IC Components Ltd Online, buy 1.5SMC150A Bourns, Inc. with warrantied. 100% guarantee confidence. RFQ 1.5SMC150A: Info@IC-Components.com

The specifications of 1.5SMC150A

Part Number	1.5SMC150A	Manufacturer / Brand	Bourns, Inc.
Series	-	Moisture Sensitivity Level (MSL)	1 (Unlimited)
Package / Case	DO-214AB, SMC	Packaging	Tape & Reel (TR)
Mounting Type	Surface Mount	Supplier Device Package	DO-214AB (SMC)
Operating Temperature	-55°C ~ 150°C (TJ)	Type	Zener
Capacitance @ Frequency	-	Applications	General Purpose
Unidirectional Channels	1	Voltage - Reverse Standoff (Typ)	128V
Voltage - Breakdown (Min)	143V	Voltage - Clamping (Max) @ Ipp	207V
Current - Peak Pulse (10/1000µs)	7.3A	Power - Peak Pulse	1500W (1.5kW)
Power Line Protection	No	Other Names	1.5SMC150ABB
Stock Quantity	9000 pcs Stock	Category	Circuit Protection > TVS - Diodes
Description	TVS DIODE 128V 207V DO214AB	Lead Free Status / RoHS Status	Lead free / RoHS Compliant

Keywords realted to 1.5SMC150A

Bourns, Inc. 1.5SMC150A	1.5SMC150A part	1.5SMC150A Price	1.5SMC150A Distributor
1.5SMC150A Technical	1.5SMC150A Stock	1.5SMC150A Inventory	1.5SMC150A Supplier
1.5SMC150A Online Order	1.5SMC150A Inquiry	1.5SMC150A Image	1.5SMC150A Picture
1.5SMC150A pdf	1.5SMC150A datasheet	1.5SMC150A data sheet	1.5SMC150A pdf datasheet
Download 1.5SMC150A datasheet	Bourns, Inc. Manufacturer	Bourns, Inc. 1.5SMC150A	Bourns Inc. 1.5SMC150A
J.W. Miller / Bourns 1.5SMC150A			

You May Be Also Be interested In:

<p>1.5SMC16A Description: TVS DIODE 13.6V 22.5V DO214AB Manufacturers: Bourns, Inc. In Stock: New original, 16000 pcs Stock Available.</p> <p>Quote: <input type="button" value="RFQ"/></p>	<p>1.5SMC13CA Description: TVS DIODE 11.1V 18.2V DO214AB Manufacturers: Hamlin / Littelfuse In Stock: New original, 7200 pcs Stock Available.</p> <p>Quote: <input type="button" value="RFQ"/></p>	<p>1.5SMC12CA Description: TVS DIODE 10.2VWM 16.7VC SMD Manufacturers: IAR Systems Software Inc In Stock: New original, 8000 pcs Stock Available.</p> <p>Quote: <input type="button" value="RFQ"/></p>
<p>1.5SMC12CA Description: TVS DIODE 10.2V 16.7V DO214AB Manufacturers: Bourns, Inc. In Stock: New original, 8000 pcs Stock Available.</p> <p>Quote: <input type="button" value="RFQ"/></p>	<p>1.5SMC15CA Description: TVS DIODE 12.8V 21.2V DO214AB Manufacturers: Hamlin / Littelfuse In Stock: New original, 9000 pcs Stock Available.</p> <p>Quote: <input type="button" value="RFQ"/></p>	<p>1.5SMC13AT3G Description: TVS DIODE 11.1V 18.2V SMC Manufacturers: Hamlin / Littelfuse In Stock: New original, 6500 pcs Stock Available.</p> <p>Quote: <input type="button" value="RFQ"/></p>
<p>1.5SMC12A-E3/57T Description: TVS DIODE 10.2V 16.7V DO214AB Manufacturers: Electro-Films (EFI) / Vishay In Stock: New original, 900 pcs Stock Available.</p> <p>Quote: <input type="button" value="RFQ"/></p>	<p>1.5SMC15A Description: TVS DIODE 12.8V 21.2V DO214AB Manufacturers: Bourns, Inc. In Stock: New original, 13300 pcs Stock Available.</p> <p>Quote: <input type="button" value="RFQ"/></p>	<p>1.5SMC150CA Description: TVS DIODE 128V 207V DO214AB Manufacturers: Bourns, Inc. In Stock: New original, 100 pcs Stock Available.</p> <p>Quote: <input type="button" value="RFQ"/></p>
<p>1.5SMC12CAHE3/57T Description: TVS DIODE 10.2V 16.7V DO214AB Manufacturers: Electro-Films (EFI) / Vishay In Stock: New original, 5000 pcs Stock Available.</p> <p>Quote: <input type="button" value="RFQ"/></p>	<p>1.5SMC150AT3G Description: 1.5SMC150AT3G ON DO-214ABSMC Manufacturers: AMI Semiconductor / ON Semiconductor In Stock: New original, 5000 pcs Stock Available.</p> <p>Quote: <input type="button" value="RFQ"/></p>	<p>1.5SMC150A Description: TVS DIODE 128V 207V DO214AB Manufacturers: Hamlin / Littelfuse In Stock: New original, 9000 pcs Stock Available.</p> <p>Quote: <input type="button" value="RFQ"/></p>
<p>1.5SMC15A R6 Description: 1.5SMC15A R6 TSC SMC Manufacturers: TSC In Stock: New original, 300 pcs Stock Available.</p> <p>Quote: <input type="button" value="RFQ"/></p>	<p>1.5SMC12AT3 Description: TVS DIODE 10.2V 16.7V SMC Manufacturers: AMI Semiconductor / ON Semiconductor In Stock: New original, 1800 pcs Stock Available.</p> <p>Quote: <input type="button" value="RFQ"/></p>	<p>1.5SMC13A-E3/57T Description: TVS DIODE 11.1V 18.2V DO214AB Manufacturers: Electro-Films (EFI) / Vishay In Stock: New original, 16000 pcs Stock Available.</p> <p>Quote: <input type="button" value="RFQ"/></p>
<p>1.5SMC130CA Description: TVS DIODE 111V 179V DO214AB Manufacturers: Hamlin / Littelfuse In Stock: New original, 5000 pcs Stock Available.</p> <p>Quote: <input type="button" value="RFQ"/></p>	<p>1.5SMC15A Description: TVS DIODE 12.8V 21.2V DO214AB Manufacturers: Hamlin / Littelfuse In Stock: New original, 13300 pcs Stock Available.</p> <p>Quote: <input type="button" value="RFQ"/></p>	<p>1.5SMC12CA Description: TVS DIODE 10.2V 16.7V DO214AB Manufacturers: Hamlin / Littelfuse In Stock: New original, 8000 pcs Stock Available.</p> <p>Quote: <input type="button" value="RFQ"/></p>
<p>1.5SMC15CA Description: TVS DIODE 12.8V 21.2V DO214AB Manufacturers: Bourns, Inc. In Stock: New original, 9000 pcs Stock Available.</p> <p>Quote: <input type="button" value="RFQ"/></p>	<p>1.5SMC12A Description: TVS DIODE 10.2V 16.7V DO214AB Manufacturers: Bourns, Inc. In Stock: New original, 7600 pcs Stock Available.</p> <p>Quote: <input type="button" value="RFQ"/></p>	<p>1.5SMC16A Description: TVS DIODE 13.6VWM 22.5VC SMD Manufacturers: IAR Systems Software Inc In Stock: New original, 16000 pcs Stock Available.</p> <p>Quote: <input type="button" value="RFQ"/></p>
<p>1.5SMC12AT3G Description: TVS DIODE 10.2V 16.7V SMC Manufacturers: Hamlin / Littelfuse In Stock: New original, 10000 pcs Stock Available.</p> <p>Quote: <input type="button" value="RFQ"/></p>	<p>1.5SMC160AT3G Description: 1.5SMC160AT3G ON DO-214AB Manufacturers: AMI Semiconductor / ON Semiconductor In Stock: New original, 2500 pcs Stock Available.</p> <p>Quote: <input type="button" value="RFQ"/></p>	<p>1.5SMC160A-E3/57T Description: TVS DIODE 136V 219V DO214AB Manufacturers: Electro-Films (EFI) / Vishay In Stock: New original, 1300 pcs Stock Available.</p> <p>Quote: <input type="button" value="RFQ"/></p>
<p>1.5SMC15AT3 Description: TVS DIODE 12.8V 21.2V SMC Manufacturers: Hamlin / Littelfuse In Stock: New original, 100 pcs Stock Available.</p> <p>Quote: <input type="button" value="RFQ"/></p>	<p>1.5SMC13CA Description: TVS DIODE 11.1V 18.2V DO214AB Manufacturers: Bourns, Inc. In Stock: New original, 7200 pcs Stock Available.</p> <p>Quote: <input type="button" value="RFQ"/></p>	<p>1.5SMC150CA Description: TVS DIODE 128V 207V DO214AB Manufacturers: Hamlin / Littelfuse In Stock: New original, 100 pcs Stock Available.</p> <p>Quote: <input type="button" value="RFQ"/></p>
<p>1.5SMC130AT3G Description: 1.5SMC130AT3G ON DO-214ABSMC Manufacturers: AMI Semiconductor / ON Semiconductor In Stock: New original, 5000 pcs Stock Available.</p> <p>Quote: <input type="button" value="RFQ"/></p>	<p>1.5SMC130CA Description: TVS DIODE 111V 179V DO214AB Manufacturers: Bourns, Inc. In Stock: New original, 5000 pcs Stock Available.</p> <p>Quote: <input type="button" value="RFQ"/></p>	<p>1.5SMC15AT3G Description: TVS DIODE 12.8V 21.2V SMC Manufacturers: Hamlin / Littelfuse In Stock: New original, 6800 pcs Stock Available.</p> <p>Quote: <input type="button" value="RFQ"/></p>



IC Components Limited
WWW.IC-COMPONENTS.COM

Email: Info@IC-Components.com
TEL: 00 852 - 30501935
FAX: 00 852 - 30501945

Address: 6H Block 1, Sherwood Court, Kingswood Villa, Tin Shui Wai, New Territories, Hong Kong