

1210L005WR

Manufacturer Part Number:	1210L005WR
Manufacturer / Brand	Littelfuse
Part of Description:	LITTELFUSE SMD
Datasheets:	1210L005WR.pdf
Lead Free Status / RoHS Status:	
Stock Condition:	New original, 5000 pcs Stock Available.
Ship From:	Hong Kong
Shipment Way:	DHL/Fedex/TNT/UPS

GET A QUOTE

1210L005WR 100% New Original 5000pcs in Stock, Find 1210L005WR Price, Stock, datasheet at IC Components Ltd Online, buy 1210L005WR Hamlin / Littelfuse with warrantied. 100% guarantee confidence. RFQ 1210L005WR: Info@IC-Components.com

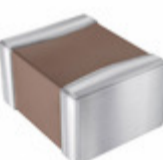
The specifications of 1210L005WR

Part Number	1210L005WR	Manufacturer / Brand	Littelfuse
Voltage - Max	30V	Type	Polymeric
Time to Trip	1.5s	Thickness (Max)	0.049" (1.25mm)
Size / Dimension	0.127" L x 0.102" W (3.22mm x 2.58mm)	Series	POLY-FUSE®, 1210L
Resistance - Post Trip (R1) (Max)	50 Ohms	Resistance - Initial (Ri) (Min)	3.6 Ohms
Ratings	-	Packaging	Tape & Reel (TR)
Package / Case	1210 (3225 Metric), Concave	Other Names	1210L005WR-ND F2999TR
Operating Temperature	-40°C ~ 85°C	Mounting Type	Surface Mount
Moisture Sensitivity Level (MSL)	1 (Unlimited)	Lead Spacing	-
Height - Seated (Max)	-	Detailed Description	Polymeric PTC Resettable Fuse 30V 50mA 1h Surface Mount 1210 (3225 Metric), Concave
Current - Trip (It)	150mA	Current - Max	10A
Current - Hold (Ih) (Max)	50mA	Approvals	cURus, TUV
Stock Quantity	5000 pcs Stock	Category	Integrated Circuits (ICs) > Specialized ICs
Description	LITTELFUSE SMD	Lead Free Status / RoHS Status	

Keywords realted to 1210L005WR

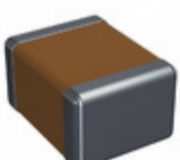
Hamlin / Littelfuse 1210L005WR	1210L005WR part	1210L005WR Price	1210L005WR Distributor
1210L005WR Technical	1210L005WR Stock	1210L005WR Inventory	1210L005WR Supplier
1210L005WR Online Order	1210L005WR Inquiry	1210L005WR Image	1210L005WR Picture
1210L005WR pdf	1210L005WR datasheet	1210L005WR data sheet	1210L005WR pdf datasheet
Download 1210L005WR datasheet	Hamlin / Littelfuse Manufacturer	Hamlin / Littelfuse 1210L005WR	Littelfuse Inc. 1210L005WR
Littelfuse 1210L005WR	Teccor / Littelfuse 1210L005WR	TE Connectivity Raychem Circuit Protection / Litte 1210L005WR	Wickmann / Littelfuse 1210L005WR

You May Be Also Be interested In:



1210GC331KAT1A
Description: CAP CER 330PF 2KV X7R 1210
Manufacturers: AVX Corporation
In Stock: New original, 2745 pcs Stock Available.

Quote:



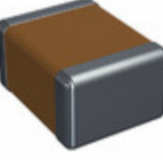
1210PC102KAT1A
Description: CAP CER 1000PF 250V X7R 1210
Manufacturers: AVX Corporation
In Stock: New original, 2771 pcs Stock Available.

Quote:



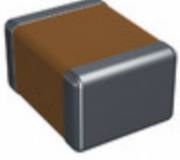
1210L075/24PR
Description: PTC RESET FUSE 24V 750MA 1210
Manufacturers: Hamlin / Littelfuse
In Stock: New original, 2682 pcs Stock Available.

Quote:



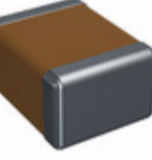
1210GC471MAT1A
Description: CAP CER 470PF 2KV X7R 1210
Manufacturers: AVX Corporation
In Stock: New original, 2786 pcs Stock Available.

Quote:



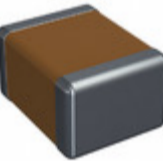
1210PC473KAT1A
Description: CAP CER 0.047UF 250V X7R 1210
Manufacturers: AVX Corporation
In Stock: New original, 2609 pcs Stock Available.

Quote:



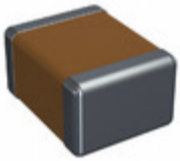
1210GC681KAT1A
Description: CAP CER 680PF 2KV X7R 1210
Manufacturers: AVX Corporation
In Stock: New original, 2629 pcs Stock Available.

Quote:



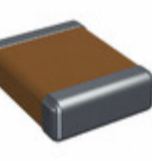
1210PC103KAT1A
Description: CAP CER 10000PF 250V X7R 1210
Manufacturers: AVX Corporation
In Stock: New original, 2791 pcs Stock Available.

Quote:



1210GC471KAT1AJ
Description: CAP CER 470PF 2KV X7R 1210
Manufacturers: AVX Corporation
In Stock: New original, 2745 pcs Stock Available.

Quote:



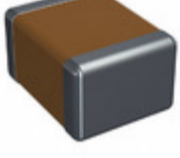
1210PC104KAT2A
Description: CAP CER 0.1UF 250V X7R 1210
Manufacturers: AVX Corporation
In Stock: New original, 2809 pcs Stock Available.

Quote:



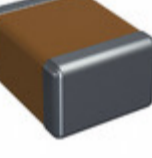
1210L110WR
Description: PTC RESET FUSE 8V 1.1A 1210
Manufacturers: Hamlin / Littelfuse
In Stock: New original, 42300 pcs Stock Available.

Quote:



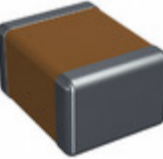
1210PC104KAT1A
Description: CAP CER 0.1UF 250V X7R 1210
Manufacturers: AVX Corporation
In Stock: New original, 2812 pcs Stock Available.

Quote:



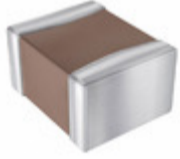
1210GC332KAZ1A
Description: CAP CER 3300PF 2KV X7R 1210
Manufacturers: AVX Corporation
In Stock: New original, 2734 pcs Stock Available.

Quote:



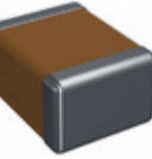
1210PC472KAT1A
Description: CAP CER 4700PF 250V X7R 1210
Manufacturers: AVX Corporation
In Stock: New original, 2730 pcs Stock Available.

Quote:



1210GC471KAT1A
Description: CAP CER 470PF 2KV X7R 1210
Manufacturers: AVX Corporation
In Stock: New original, 2769 pcs Stock Available.

Quote:



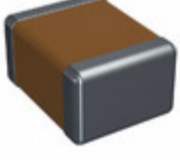
1210GC681KAT9A
Description: CAP CER 680PF 2KV X7R 1210
Manufacturers: AVX Corporation
In Stock: New original, 2711 pcs Stock Available.

Quote:



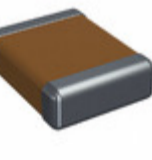
1210GX224KNT
Description: 1210GX224KNT UTC 1210
Manufacturers: UTC
In Stock: New original, 24000 pcs Stock Available.

Quote:



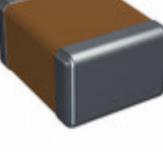
1210GC332KAT1A
Description: CAP CER 3300PF 2KV X7R 1210
Manufacturers: AVX Corporation
In Stock: New original, 2783 pcs Stock Available.

Quote:



1210PC473KAT2A
Description: CAP CER 0.047UF 250V X7R 1210
Manufacturers: AVX Corporation
In Stock: New original, 2609 pcs Stock Available.

Quote:



1210GC561KAT1A
Description: CAP CER 560PF 2KV X7R 1210
Manufacturers: AVX Corporation
In Stock: New original, 2878 pcs Stock Available.

Quote:



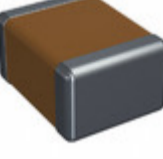
1210L010WR
Description: PTC RESET FUSE 30V 100MA 1210
Manufacturers: Hamlin / Littelfuse
In Stock: New original, 2879 pcs Stock Available.

Quote:



1210J2DB
Description: 1210J2DB AGERE BGA
Manufacturers: AGERE
In Stock: New original, 2791 pcs Stock Available.

Quote:



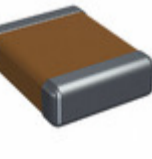
1210GC272MAT1A
Description: CAP CER 2700PF 2KV X7R 1210
Manufacturers: AVX Corporation
In Stock: New original, 2759 pcs Stock Available.

Quote:



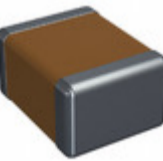
1210L050YR
Description: PTC RESET FUSE 13.2V 500MA 1210
Manufacturers: Hamlin / Littelfuse
In Stock: New original, 379000 pcs Stock Available.

Quote:



1210PC472KAT2A
Description: CAP CER 4700PF 250V X7R 1210
Manufacturers: AVX Corporation
In Stock: New original, 2858 pcs Stock Available.

Quote:



1210GC821KAT1A
Description: CAP CER 820PF 2KV X7R 1210
Manufacturers: AVX Corporation
In Stock: New original, 2780 pcs Stock Available.

Quote:



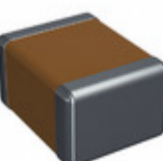
1210L150PR
Description: PTC RESET FUSE 6V 1.5A 1210
Manufacturers: Hamlin / Littelfuse
In Stock: New original, 2777 pcs Stock Available.

Quote:



1210HS-103EJFS
Description: 1210HS-103EJFS DELTD SMD3225
Manufacturers: DELTD
In Stock: New original, 5600 pcs Stock Available.

Quote:



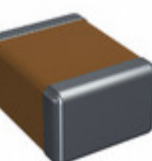
1210PC333KAT1A
Description: CAP CER 0.033UF 250V X7R 1210
Manufacturers: AVX Corporation
In Stock: New original, 2620 pcs Stock Available.

Quote:



1210L350SLWR
Description: PTC RESET FUSE 6V 3.5A 1210
Manufacturers: Hamlin / Littelfuse
In Stock: New original, 38800 pcs Stock Available.

Quote:



1210GC391KAT1A
Description: CAP CER 390PF 2KV X7R 1210
Manufacturers: AVX Corporation
In Stock: New original, 2697 pcs Stock Available.

Quote:



IC Components Limited
WWW.IC-COMPONENTS.COM

Email: Info@IC-Components.com
TEL: 00 852 - 30501935
FAX: 00 852 - 30501945

Address: 6H Block 1, Sherwood Court, Kingswood Villa, Tin Shui Wai, New Territories, Hong Kong