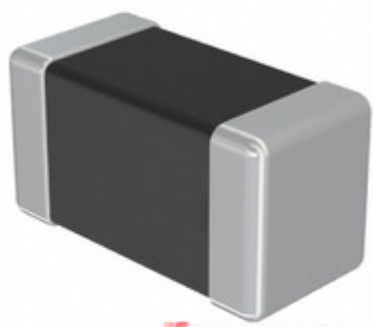


TAIYO YUDEN



IC Components Limited

EMK042B7102KC-W

Manufacturer Part Number:	EMK042B7102KC-W
Manufacturer / Brand:	Taiyo Yuden
Part of Description:	CAP CER 1000PF 16V X7R 01005
Datasheets:	EMK042B7102KC-W.pdf
Lead Free Status / RoHS Status:	Lead free / RoHS Compliant
Stock Condition:	New original, Stock Available.
Ship From:	Hong Kong
Shipment Way:	DHL/Fedex/TNT/UPS

[GET A QUOTE](#)

EMK042B7102KC-W 100% New Original Opes in Stock, Find EMK042B7102KC-W Price, Stock, datasheet at IC Components Ltd Online, buy EMK042B7102KC-W Taiyo Yuden with warrantied, 100% guarantee confidence. RFQ EMK042B7102KC-W: Info@IC-Components.com

The specifications of EMK042B7102KC-W

Part Number	EMK042B7102KC-W	Manufacturer / Brand	Taiyo Yuden
Series	M	Moisture Sensitivity Level (MSL)	1 (Unlimited)
Package / Case	01005 (0402 Metric)	Packaging	Tape & Reel (TR)
Mounting Type	Surface Mount, MLCC	Operating Temperature	-55°C ~ 125°C
Detailed Description	1000pF ±10% 16V Ceramic Capacitor X7R 01005 (0402 Metric)	Voltage - Rated	16V
Ratings	-	Size / Dimension	0.016" L x 0.008" W (0.40mm x 0.20mm)
Height - Seated (Max)	-	Features	-
Capacitance	1000pF	Tolerance	±10%
Applications	General Purpose	Lead Spacing	-
Temperature Coefficient	X7R	Thickness (Max)	0.009" (0.22mm)
Lead Style	-	Other Names	EMK042B7102KCW RM EMK042 B7102KC-W
Category	Capacitors > Ceramic Capacitors	Description	CAP CER 1000PF 16V X7R 01005
Lead Free Status / RoHS Status	Lead free / RoHS Compliant		

Keywords related to EMK042B7102KC-W

Taiyo Yuden EMK042B7102KC-W	EMK042B7102KC-W part	EMK042B7102KC-W Price	EMK042B7102KC-W Distributor
EMK042B7102KC-W Technical	EMK042B7102KC-W Stock	EMK042B7102KC-W Inventory	EMK042B7102KC-W Supplier
EMK042B7102KC-W Online Order	EMK042B7102KC-W Inquiry	EMK042B7102KC-W Image	EMK042B7102KC-W Picture
EMK042B7102KC-W pdf	EMK042B7102KC-W datasheet	EMK042B7102KC-W data sheet	EMK042B7102KC-W pdf datasheet
Download EMK042B7102KC-W datasheet	Taiyo Yuden Manufacturer	Taiyo Yuden EMK042B7102KC-W	

You May Be Also Be interested In:

 EMK042CG030CC-FW Description: CAP CER 3PF 16V NP0 01005 Manufacturers: Taiyo Yuden In Stock: New original, Stock Available. Quote: <input type="text"/> <input type="button" value="RFQ"/>	 EMK042B7471KC-W Description: CAP CER 470PF 16V X7R 01005 Manufacturers: Taiyo Yuden In Stock: New original, Stock Available. Quote: <input type="text"/> <input type="button" value="RFQ"/>	 EMK042CG030CD-W Description: CAP CER 3PF 16V NP0 01005 Manufacturers: Taiyo Yuden In Stock: New original, Stock Available. Quote: <input type="text"/> <input type="button" value="RFQ"/>
 EMK042CG040CD-W Description: CAP CER 4PF 16V NP0 01005 Manufacturers: Taiyo Yuden In Stock: New original, Stock Available. Quote: <input type="text"/> <input type="button" value="RFQ"/>	 EMK042CG040CC-F Description: CAP CER 4PF 16V NP0 01005 Manufacturers: Taiyo Yuden In Stock: New original, Stock Available. Quote: <input type="text"/> <input type="button" value="RFQ"/>	 EMK042B7681MC-W Description: CAP CER 680PF 16V X7R 01005 Manufacturers: Taiyo Yuden In Stock: New original, Stock Available. Quote: <input type="text"/> <input type="button" value="RFQ"/>
 EMK042CG010CC-F Description: CAP CER 1PF 16V NP0 01005 Manufacturers: Taiyo Yuden In Stock: New original, Stock Available. Quote: <input type="text"/> <input type="button" value="RFQ"/>	 EMK042B7221MC-W Description: CAP CER 220PF 16V X7R 01005 Manufacturers: Taiyo Yuden In Stock: New original, Stock Available. Quote: <input type="text"/> <input type="button" value="RFQ"/>	 EMK042B7101MC-W Description: CAP CER 100PF 16V X7R 01005 Manufacturers: Taiyo Yuden In Stock: New original, Stock Available. Quote: <input type="text"/> <input type="button" value="RFQ"/>
 EMK042B7102MC-W Description: CAP CER 1000PF 16V X7R 01005 Manufacturers: Taiyo Yuden In Stock: New original, Stock Available. Quote: <input type="text"/> <input type="button" value="RFQ"/>	 EMK042CG030CC-F Description: CAP CER 3PF 16V NP0 01005 Manufacturers: Taiyo Yuden In Stock: New original, Stock Available. Quote: <input type="text"/> <input type="button" value="RFQ"/>	 EMK042CG060DC-F Description: CAP CER 6PF 16V NP0 01005 Manufacturers: Taiyo Yuden In Stock: New original, Stock Available. Quote: <input type="text"/> <input type="button" value="RFQ"/>
 EMK042B7681KC-W Description: CAP CER 680PF 16V X7R 01005 Manufacturers: Taiyo Yuden In Stock: New original, Stock Available. Quote: <input type="text"/> <input type="button" value="RFQ"/>	 EMK042B7221KC-W Description: CAP CER 220PF 16V X7R 01005 Manufacturers: Taiyo Yuden In Stock: New original, Stock Available. Quote: <input type="text"/> <input type="button" value="RFQ"/>	 EMK042CG010CC-FW Description: CAP CER 1PF 16V NP0 01005 Manufacturers: Taiyo Yuden In Stock: New original, Stock Available. Quote: <input type="text"/> <input type="button" value="RFQ"/>
 EMK042CG020CC-F Description: CAP CER 2PF 16V NP0 01005 Manufacturers: Taiyo Yuden In Stock: New original, Stock Available. Quote: <input type="text"/> <input type="button" value="RFQ"/>	 EMK042CG050CC-FW Description: CAP CER 5PF 16V NP0 01005 Manufacturers: Taiyo Yuden In Stock: New original, Stock Available. Quote: <input type="text"/> <input type="button" value="RFQ"/>	 EMK042CG010CD-W Description: CAP CER 1PF 16V NP0 01005 Manufacturers: Taiyo Yuden In Stock: New original, Stock Available. Quote: <input type="text"/> <input type="button" value="RFQ"/>
 EMK042B7471MC-W Description: CAP CER 470PF 16V X7R 01005 Manufacturers: Taiyo Yuden In Stock: New original, Stock Available. Quote: <input type="text"/> <input type="button" value="RFQ"/>	 EMK042B7331KC-W Description: CAP CER 330PF 16V X7R 01005 Manufacturers: Taiyo Yuden In Stock: New original, Stock Available. Quote: <input type="text"/> <input type="button" value="RFQ"/>	 EMK042B7101KC-W Description: CAP CER 100PF 16V X7R 01005 Manufacturers: Taiyo Yuden In Stock: New original, Stock Available. Quote: <input type="text"/> <input type="button" value="RFQ"/>
 EMK042B7151MC-W Description: CAP CER 150PF 16V X7R 01005 Manufacturers: Taiyo Yuden In Stock: New original, Stock Available. Quote: <input type="text"/> <input type="button" value="RFQ"/>	 EMK042CG050CD-W Description: CAP CER 5PF 16V NP0 01005 Manufacturers: Taiyo Yuden In Stock: New original, Stock Available. Quote: <input type="text"/> <input type="button" value="RFQ"/>	 EMK042CG020CC-FW Description: CAP CER 2PF 16V NP0 01005 Manufacturers: Taiyo Yuden In Stock: New original, Stock Available. Quote: <input type="text"/> <input type="button" value="RFQ"/>
 EMK042CG020CD-W Description: CAP CER 2PF 16V NP0 01005 Manufacturers: Taiyo Yuden In Stock: New original, Stock Available. Quote: <input type="text"/> <input type="button" value="RFQ"/>	 EMK042CG040CC-FW Description: CAP CER 4PF 16V NP0 01005 Manufacturers: Taiyo Yuden In Stock: New original, Stock Available. Quote: <input type="text"/> <input type="button" value="RFQ"/>	 EMK042B7151KC-W Description: CAP CER 150PF 16V X7R 01005 Manufacturers: Taiyo Yuden In Stock: New original, Stock Available. Quote: <input type="text"/> <input type="button" value="RFQ"/>
 EMK042B7331MC-W Description: CAP CER 330PF 16V X7R 01005 Manufacturers: Taiyo Yuden In Stock: New original, Stock Available. Quote: <input type="text"/> <input type="button" value="RFQ"/>	 EMK042CG060DC-FW Description: CAP CER 6PF 16V NP0 01005 Manufacturers: Taiyo Yuden In Stock: New original, Stock Available. Quote: <input type="text"/> <input type="button" value="RFQ"/>	 EMK042CG050CC-F Description: CAP CER 5PF 16V NP0 01005 Manufacturers: Taiyo Yuden In Stock: New original, Stock Available. Quote: <input type="text"/> <input type="button" value="RFQ"/>



IC Components Limited
WWW.IC-COMPONENTS.COM

Email: Info@IC-Components.com
TEL: 00 852 - 30501935
FAX: 00 852 - 30501945

Address: 6H Block 1, Sherwood Court, Kingswood Villa, Tin Shui Wai, New Territories, Hong Kong