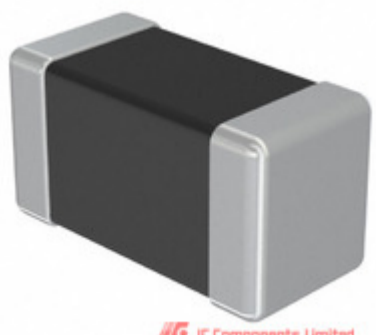


**TAIYO YUDEN**



**EMK042CG120JC-F**

Manufacturer Part Number:	EMK042CG120JC-F
Manufacturer / Brand:	Taiyo Yuden
Part of Description:	CAP CER 12PF 16V NP0 01005
Datasheets:	<a href="#">EMK042CG120JC-F(1).pdf</a> <a href="#">EMK042CG120JC-F(2).pdf</a>
Lead Free Status / RoHS Status:	Lead free / RoHS Compliant
Stock Condition:	New original, Stock Available.
Ship From:	Hong Kong
Shipment Way:	DHL/Fedex/TNT/UPS

**GET A QUOTE**

EMK042CG120JC-F 100% New Original Opcs in Stock, Find EMK042CG120JC-F Price, Stock, datasheet at IC Components Ltd Online, buy EMK042CG120JC-F Taiyo Yuden with warrantied. 100% guarantee confidence. RFQ EMK042CG120JC-F: [Info@IC-Components.com](mailto:Info@IC-Components.com)

The specifications of EMK042CG120JC-F

Part Number	EMK042CG120JC-F	Manufacturer / Brand	Taiyo Yuden
Series	M	Moisture Sensitivity Level (MSL)	1 (Unlimited)
Package / Case	01005 (0402 Metric)	Packaging	Original-Reel®
Mounting Type	Surface Mount, MLCC	Operating Temperature	-55°C ~ 125°C
Detailed Description	12pF ±5% 16V Ceramic Capacitor C0G, NP0 01005 (0402 Metric)	Voltage - Rated	16V
Ratings	-	Size / Dimension	0.016" L x 0.008" W (0.40mm x 0.20mm)
Height - Seated (Max)	-	Features	-
Capacitance	12pF	Tolerance	±5%
Applications	General Purpose	Lead Spacing	-
Temperature Coefficient	C0G, NP0	Thickness (Max)	0.009" (0.22mm)
Lead Style	-	Other Names	587-2128-6
Category	<a href="#">Capacitors &gt; Ceramic Capacitors</a>	Description	CAP CER 12PF 16V NP0 01005
Lead Free Status / RoHS Status	Lead free / RoHS Compliant		

Keywords related to EMK042CG120JC-F

<a href="#">Taiyo Yuden EMK042CG120JC-F</a>	<a href="#">EMK042CG120JC-F part</a>	<a href="#">EMK042CG120JC-F Price</a>	<a href="#">EMK042CG120JC-F Distributor</a>
<a href="#">EMK042CG120JC-F Technical</a>	<a href="#">EMK042CG120JC-F Stock</a>	<a href="#">EMK042CG120JC-F Inventory</a>	<a href="#">EMK042CG120JC-F Supplier</a>
<a href="#">EMK042CG120JC-F Online Order</a>	<a href="#">EMK042CG120JC-F Inquiry</a>	<a href="#">EMK042CG120JC-F Image</a>	<a href="#">EMK042CG120JC-F Picture</a>
<a href="#">EMK042CG120JC-F pdf</a>	<a href="#">EMK042CG120JC-F datasheet</a>	<a href="#">EMK042CG120JC-F data sheet</a>	<a href="#">EMK042CG120JC-F pdf datasheet</a>
<a href="#">Download EMK042CG120JC-F datasheet</a>	<a href="#">Taiyo Yuden Manufacturer</a>	<a href="#">Taiyo Yuden EMK042CG120JC-F</a>	

You May Be Also Be interested In:

<p><b>EMK042CG100DD-W</b> Description: CAP CER 10PF 16V NP0 01005 Manufacturers: Taiyo Yuden In Stock: New original, Stock Available. Quote: <input type="button" value="RFQ"/></p>	<p><b>EMK042CG180JC-F</b> Description: CAP CER 18PF 16V NP0 01005 Manufacturers: Taiyo Yuden In Stock: New original, Stock Available. Quote: <input type="button" value="RFQ"/></p>	<p><b>EMK042CG150JC-FW</b> Description: CAP CER 15PF 16V NP0 01005 Manufacturers: Taiyo Yuden In Stock: New original, Stock Available. Quote: <input type="button" value="RFQ"/></p>
<p><b>EMK042CG080DC-F</b> Description: CAP CER 8PF 16V NP0 01005 Manufacturers: Taiyo Yuden In Stock: New original, Stock Available. Quote: <input type="button" value="RFQ"/></p>	<p><b>EMK042CG1R5CD-W</b> Description: CAP CER 1.5PF 16V NP0 01005 Manufacturers: Taiyo Yuden In Stock: New original, Stock Available. Quote: <input type="button" value="RFQ"/></p>	<p><b>EMK042CG0R5CD-W</b> Description: CAP CER 0.5PF 16V NP0 01005 Manufacturers: Taiyo Yuden In Stock: New original, Stock Available. Quote: <input type="button" value="RFQ"/></p>
<p><b>EMK042CG0R5CC-FW</b> Description: CAP CER 0.5PF 16V NP0 01005 Manufacturers: Taiyo Yuden In Stock: New original, Stock Available. Quote: <input type="button" value="RFQ"/></p>	<p><b>EMK042CG1R5CC-FW</b> Description: CAP CER 1.5PF 16V NP0 01005 Manufacturers: Taiyo Yuden In Stock: New original, Stock Available. Quote: <input type="button" value="RFQ"/></p>	<p><b>EMK042CG101JC-W</b> Description: CAP CER 100PF 16V C0G 01005 Manufacturers: Taiyo Yuden In Stock: New original, 35300 pcs Stock Available. Quote: <input type="button" value="RFQ"/></p>
<p><b>EMK042CG101JC-FW</b> Description: CAP CER 100PF 16V NP0 01005 Manufacturers: Taiyo Yuden In Stock: New original, Stock Available. Quote: <input type="button" value="RFQ"/></p>	<p><b>EMK042CG1R2CD-W</b> Description: CAP CER 1.2PF 16V NP0 01005 Manufacturers: Taiyo Yuden In Stock: New original, Stock Available. Quote: <input type="button" value="RFQ"/></p>	<p><b>EMK042CG090DD-W</b> Description: CAP CER 9PF 16V NP0 01005 Manufacturers: Taiyo Yuden In Stock: New original, Stock Available. Quote: <input type="button" value="RFQ"/></p>
<p><b>EMK042CG120JC-FW</b> Description: CAP CER 12PF 16V NP0 01005 Manufacturers: Taiyo Yuden In Stock: New original, Stock Available. Quote: <input type="button" value="RFQ"/></p>	<p><b>EMK042CG180JC-W</b> Description: CAP CER 18PF 16V C0G 01005 Manufacturers: Taiyo Yuden In Stock: New original, Stock Available. Quote: <input type="button" value="RFQ"/></p>	<p><b>EMK042CG100DC-FW</b> Description: CAP CER 10PF 16V NP0 01005 Manufacturers: Taiyo Yuden In Stock: New original, Stock Available. Quote: <input type="button" value="RFQ"/></p>
<p><b>EMK042CG160JC-W</b> Description: CAP CER 16PF 16V C0G 01005 Manufacturers: Taiyo Yuden In Stock: New original, Stock Available. Quote: <input type="button" value="RFQ"/></p>	<p><b>EMK042CG090DC-FW</b> Description: CAP CER 9PF 16V NP0 01005 Manufacturers: Taiyo Yuden In Stock: New original, Stock Available. Quote: <input type="button" value="RFQ"/></p>	<p><b>EMK042CG150JC-F</b> Description: CAP CER 15PF 16V NP0 01005 Manufacturers: Taiyo Yuden In Stock: New original, Stock Available. Quote: <input type="button" value="RFQ"/></p>
<p><b>EMK042CG101JC-F</b> Description: CAP CER 100PF 16V NP0 01005 Manufacturers: Taiyo Yuden In Stock: New original, Stock Available. Quote: <input type="button" value="RFQ"/></p>	<p><b>EMK042CG150JD-W</b> Description: CAP CER 15PF 16V NP0 01005 Manufacturers: Taiyo Yuden In Stock: New original, Stock Available. Quote: <input type="button" value="RFQ"/></p>	<p><b>EMK042CG180JC-FW</b> Description: CAP CER 18PF 16V NP0 01005 Manufacturers: Taiyo Yuden In Stock: New original, Stock Available. Quote: <input type="button" value="RFQ"/></p>
<p><b>EMK042CG080DD-W</b> Description: CAP CER 8PF 16V NP0 01005 Manufacturers: Taiyo Yuden In Stock: New original, Stock Available. Quote: <input type="button" value="RFQ"/></p>	<p><b>EMK042CG1R2CC-FW</b> Description: CAP CER 1.2PF 16V NP0 01005 Manufacturers: Taiyo Yuden In Stock: New original, Stock Available. Quote: <input type="button" value="RFQ"/></p>	<p><b>EMK042CG100DC-F</b> Description: CAP CER 10PF 16V NP0 01005 Manufacturers: Taiyo Yuden In Stock: New original, Stock Available. Quote: <input type="button" value="RFQ"/></p>
<p><b>EMK042CG120JD-W</b> Description: CAP CER 12PF 16V NP0 01005 Manufacturers: Taiyo Yuden In Stock: New original, Stock Available. Quote: <input type="button" value="RFQ"/></p>	<p><b>EMK042CG1R2CC-F</b> Description: CAP CER 1.2PF 16V NP0 01005 Manufacturers: Taiyo Yuden In Stock: New original, Stock Available. Quote: <input type="button" value="RFQ"/></p>	<p><b>EMK042CG1R5CC-F</b> Description: CAP CER 1.5PF 16V NP0 01005 Manufacturers: Taiyo Yuden In Stock: New original, Stock Available. Quote: <input type="button" value="RFQ"/></p>
<p><b>EMK042CG080DC-FW</b> Description: CAP CER 8PF 16V NP0 01005 Manufacturers: Taiyo Yuden In Stock: New original, Stock Available. Quote: <input type="button" value="RFQ"/></p>	<p><b>EMK042CG0R5CC-F</b> Description: CAP CER 0.5PF 16V NP0 01005 Manufacturers: Taiyo Yuden In Stock: New original, Stock Available. Quote: <input type="button" value="RFQ"/></p>	<p><b>EMK042CG090DC-F</b> Description: CAP CER 9PF 16V NP0 01005 Manufacturers: Taiyo Yuden In Stock: New original, Stock Available. Quote: <input type="button" value="RFQ"/></p>



**IC Components Limited**  
WWW.IC-COMPONENTS.COM

Email: [Info@IC-Components.com](mailto:Info@IC-Components.com)  
TEL: 00 852 - 30501935  
FAX: 00 852 - 30501945

Address: 6H Block 1, Sherwood Court, Kingswood Villa, Tin Shui Wai, New Territories, Hong Kong