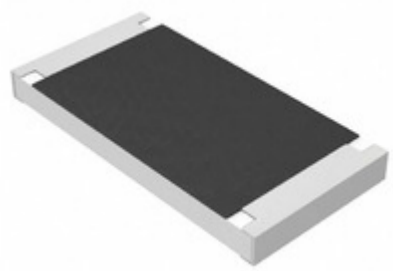


**Panasonic**



IC Components Limited

**ERJ-1TRQFR22U**

Manufacturer Part Number:	ERJ-1TRQFR22U
Manufacturer / Brand:	Panasonic
Part of Description:	RES 0.22 OHM 1% 1W 2512
Datasheets:	ERJ-1TRQFR22U.pdf
Lead Free Status / RoHS Status:	Lead free / RoHS Compliant
Stock Condition:	New original, 4000 pcs Stock Available.
Ship From:	Hong Kong
Shipment Way:	DHL/Fedex/TNT/UPS

[GET A QUOTE](#)

ERJ-1TRQFR22U 100% New Original 4000pcs in Stock, Find ERJ-1TRQFR22U Price, Stock, datasheet at IC Components Ltd Online, buy ERJ-1TRQFR22U Panasonic with warrantied. 100% guarantee confidence. RFQ ERJ-1TRQFR22U: [Info@IC-Components.com](mailto:Info@IC-Components.com)

The specifications of ERJ-1TRQFR22U

Part Number	ERJ-1TRQFR22U	Manufacturer / Brand	Panasonic
Series	ERJ	Moisture Sensitivity Level (MSL)	1 (Unlimited)
Package / Case	2512 (6432 Metric)	Packaging	Original-Reel®
Supplier Device Package	2512	Operating Temperature	-55°C ~ 125°C
Detailed Description	220 mOhms ±1% 1W Chip Resistor 2512 (6432 Metric) Automotive AEC-Q200, Current Sense Thick Film	Size / Dimension	0.252" L x 0.126" W (6.40mm x 3.20mm)
Height - Seated (Max)	0.028" (0.70mm)	Features	Automotive AEC-Q200, Current Sense
Tolerance	±1%	Temperature Coefficient	±200ppm/°C
Failure Rate	-	Power (Watts)	1W
Number of Terminations	2	Composition	Thick Film
Resistance	220 mOhms	Other Names	PT.22YDKR
Stock Quantity	4000 pcs Stock	Category	<a href="#">Resistors &gt; Chip Resistor - Surface Mount</a>
Description	RES 0.22 OHM 1% 1W 2512	Lead Free Status / RoHS Status	Lead free / RoHS Compliant

Keywords related to ERJ-1TRQFR22U

Panasonic ERJ-1TRQFR22U	ERJ-1TRQFR22U part	ERJ-1TRQFR22U Price	ERJ-1TRQFR22U Distributor
ERJ-1TRQFR22U Technical	ERJ-1TRQFR22U Stock	ERJ-1TRQFR22U Inventory	ERJ-1TRQFR22U Supplier
ERJ-1TRQFR22U Online Order	ERJ-1TRQFR22U Inquiry	ERJ-1TRQFR22U Image	ERJ-1TRQFR22U Picture
ERJ-1TRQFR22U pdf	ERJ-1TRQFR22U datasheet	ERJ-1TRQFR22U data sheet	ERJ-1TRQFR22U pdf datasheet
Download ERJ-1TRQFR22U datasheet	Panasonic Manufacturer	Panasonic ERJ-1TRQFR22U	Panasonic - Consumer Division ERJ-1TRQFR22U
Panasonic - Consumer Electronics Corp. ERJ-1TRQFR22U	Panasonic Battery Group ERJ-1TRQFR22U	Panasonic Electric Works - ACSJ ERJ-1TRQFR22U	Panasonic Electronic Components - Semiconductor Pr ERJ-1TRQFR22U
Panasonic - ATG ERJ-1TRQFR22U	Panasonic - BSG ERJ-1TRQFR22U	Panasonic - DTG ERJ-1TRQFR22U	Panasonic Electric Works ERJ-1TRQFR22U
Panasonic Electronic Components ERJ-1TRQFR22U	Panasonic Industrial Automation Sales ERJ-1TRQFR22U	Panasonic Semiconductor ERJ-1TRQFR22U	

You May Be Also Be interested In:

<p><b>ERJ3BWF039V</b> Description: ERJ3BWF039V PANASONIC SMD0603 Manufacturers: Panasonic In Stock: New original, 50000 pcs Stock Available. Quote: <input type="button" value="RFQ"/></p>	<p><b>ERJ3BWF027V</b> Description: ERJ3BWF027V PANASONIC SMD0603 Manufacturers: Panasonic In Stock: New original, 110000 pcs Stock Available. Quote: <input type="button" value="RFQ"/></p>	<p><b>ERJ-8ENF2201V</b> Description: RES SMD 2.2K OHM 1% 1/4W 1206 Manufacturers: Panasonic In Stock: New original, 1100 pcs Stock Available. Quote: <input type="button" value="RFQ"/></p>
<p><b>ERJS1DF40R2U</b> Description: ERJS1DF40R2U PANASONIC SMD Manufacturers: Panasonic In Stock: New original, 14700 pcs Stock Available. Quote: <input type="button" value="RFQ"/></p>	<p><b>ERJ-3EKF1472V</b> Description: RES SMD 14.7K OHM 1% 1/10W 0603 Manufacturers: Panasonic In Stock: New original, 2700 pcs Stock Available. Quote: <input type="button" value="RFQ"/></p>	<p><b>ERJ-14YJ121U</b> Description: RES SMD 120 OHM 5% 1/2W 1210 Manufacturers: Panasonic In Stock: New original, 700 pcs Stock Available. Quote: <input type="button" value="RFQ"/></p>
<p><b>ERJ-8ENF3570V</b> Description: RES SMD 357 OHM 1% 1/4W 1206 Manufacturers: Panasonic In Stock: New original, 5000 pcs Stock Available. Quote: <input type="button" value="RFQ"/></p>	<p><b>ERJ3BWJR020V</b> Description: ERJ3BWJR020V PANASONIC SMD0603 Manufacturers: Panasonic In Stock: New original, 2665000 pcs Stock Available. Quote: <input type="button" value="RFQ"/></p>	<p><b>ERJ-14YJ222U</b> Description: RES SMD 2.2K OHM 5% 1/2W 1210 Manufacturers: Panasonic In Stock: New original, 5000 pcs Stock Available. Quote: <input type="button" value="RFQ"/></p>
<p><b>ERJ3BWF043V</b> Description: ERJ3BWF043V PANASONIC SMD0603 Manufacturers: Panasonic In Stock: New original, 10000 pcs Stock Available. Quote: <input type="button" value="RFQ"/></p>	<p><b>ERJ3BWF100V</b> Description: ERJ3BWF100V PANASONIC SMD0603 Manufacturers: Panasonic In Stock: New original, 30000 pcs Stock Available. Quote: <input type="button" value="RFQ"/></p>	<p><b>ERJ-12ZYJ101U</b> Description: RES SMD 100 OHM 5% 3/4W 2010 Manufacturers: Panasonic In Stock: New original, 3900 pcs Stock Available. Quote: <input type="button" value="RFQ"/></p>
<p><b>RC2010JK-072R2L</b> Description: RES SMD 2.2 OHM 5% 3/4W 2010 Manufacturers: Yageo In Stock: New original, 24000 pcs Stock Available. Quote: <input type="button" value="RFQ"/></p>	<p><b>ERJ-12ZYJ152U</b> Description: RES SMD 1.5K OHM 5% 3/4W 2010 Manufacturers: Panasonic In Stock: New original, 1600 pcs Stock Available. Quote: <input type="button" value="RFQ"/></p>	<p><b>ERJ3BWF036V</b> Description: ERJ3BWF036V PANASONIC SMD0603 Manufacturers: Panasonic In Stock: New original, 140000 pcs Stock Available. Quote: <input type="button" value="RFQ"/></p>
<p><b>ERJ-2GEJ512X</b> Description: RES SMD 5.1K OHM 5% 1/10W 0402 Manufacturers: Panasonic In Stock: New original, 3200 pcs Stock Available. Quote: <input type="button" value="RFQ"/></p>	<p><b>ERJ-P14F20R0U</b> Description: ERJ-P14F20R0U PANASONIC SMD Manufacturers: Panasonic In Stock: New original, 10000 pcs Stock Available. Quote: <input type="button" value="RFQ"/></p>	<p><b>ERJ-3GSYJ392V</b> Description: ERJ-3GSYJ392V PANASONIC SMD Manufacturers: Panasonic In Stock: New original, 4400 pcs Stock Available. Quote: <input type="button" value="RFQ"/></p>
<p><b>RC0402FR-072RL</b> Description: RES SMD 2 OHM 1% 1/16W 0402 Manufacturers: Yageo In Stock: New original, 30700 pcs Stock Available. Quote: <input type="button" value="RFQ"/></p>	<p><b>ERJ-8ENF1004V</b> Description: RES SMD 1M OHM 1% 1/4W 1206 Manufacturers: Panasonic In Stock: New original, 5000 pcs Stock Available. Quote: <input type="button" value="RFQ"/></p>	<p><b>ERJ-14YJ102</b> Description: ERJ-14YJ102 Panasonic 12101KR Manufacturers: Panasonic In Stock: New original, 4000 pcs Stock Available. Quote: <input type="button" value="RFQ"/></p>
<p><b>ERJ3BWF025V</b> Description: ERJ3BWF025V PANASONIC SMD0603 Manufacturers: Panasonic In Stock: New original, 5000 pcs Stock Available. Quote: <input type="button" value="RFQ"/></p>	<p><b>ERJ-3GEYJ360V</b> Description: RES SMD 36 OHM 5% 1/10W 0603 Manufacturers: Panasonic In Stock: New original, 53000 pcs Stock Available. Quote: <input type="button" value="RFQ"/></p>	<p><b>ERJXGNF30R0Y</b> Description: ERJXGNF30R0Y Panasonic SMD Manufacturers: Panasonic In Stock: New original, 20000 pcs Stock Available. Quote: <input type="button" value="RFQ"/></p>
<p><b>ERJ3BWF024V</b> Description: ERJ3BWF024V PANASONIC SMD0603 Manufacturers: Panasonic In Stock: New original, 25000 pcs Stock Available. Quote: <input type="button" value="RFQ"/></p>	<p><b>ERJ3BWF051V</b> Description: ERJ3BWF051V PANASONIC SMD0603 Manufacturers: Panasonic In Stock: New original, 60000 pcs Stock Available. Quote: <input type="button" value="RFQ"/></p>	<p><b>ERJ-12YJ100H-10R</b> Description: ERJ-12YJ100H-10R PANASONIC 1812 Manufacturers: Panasonic In Stock: New original, 2000 pcs Stock Available. Quote: <input type="button" value="RFQ"/></p>
<p><b>ERJ3BWJR075V</b> Description: ERJ3BWJR075V PANASONIC SMD0603 Manufacturers: Panasonic In Stock: New original, 35000 pcs Stock Available. Quote: <input type="button" value="RFQ"/></p>	<p>IMAGE NOT AVAILABLE</p> <p><b>ERJXGNF10R0U</b> Description: ERJXGNF10R0U PANASOIC SMD01005 Manufacturers: PANASOIC In Stock: New original, 37600 pcs Stock Available. Quote: <input type="button" value="RFQ"/></p>	<p><b>ERJ-1TYJ1R0U</b> Description: RES SMD 1 OHM 5% 1W 2512 Manufacturers: Panasonic In Stock: New original, 1000 pcs Stock Available. Quote: <input type="button" value="RFQ"/></p>



**IC Components Limited**  
WWW.IC-COMPONENTS.COM

Email: [Info@IC-Components.com](mailto:Info@IC-Components.com)  
TEL: 00 852 - 30501935  
FAX: 00 852 - 30501945

Address: 6H Block 1, Sherwood Court, Kingswood Villa, Tin Shui Wai, New Territories, Hong Kong