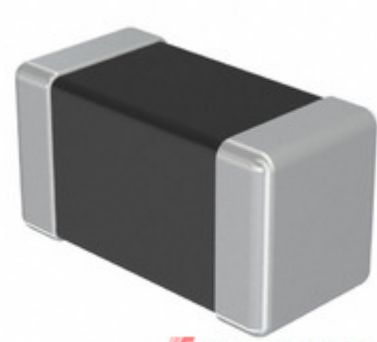


TAIYO YUDEN



IC Components Limited

EMK042CG5R6DC-FW

Manufacturer Part Number:	EMK042CG5R6DC-FW
Manufacturer / Brand:	Taiyo Yuden
Part of Description:	CAP CER 5.6PF 16V NP0 01005
Datasheets:	EMK042CG5R6DC-FW(1).pdf EMK042CG5R6DC-FW(2).pdf
Lead Free Status / RoHS Status:	Lead free / RoHS Compliant
Stock Condition:	New original, Stock Available.
Ship From:	Hong Kong
Shipment Way:	DHL/Fedex/TNT/UPS

GET A QUOTE

EMK042CG5R6DC-FW 100% New Original Opcs in Stock, Find EMK042CG5R6DC-FW Price, Stock, datasheet at IC Components Ltd Online, buy EMK042CG5R6DC-FW Taiyo Yuden with warrantied. 100% guarantee confidence. RFQ EMK042CG5R6DC-FW: Info@IC-Components.com

The specifications of EMK042CG5R6DC-FW

Part Number	EMK042CG5R6DC-FW	Manufacturer / Brand	Taiyo Yuden
Series	M	Moisture Sensitivity Level (MSL)	1 (Unlimited)
Package / Case	01005 (0402 Metric)	Packaging	Cut Tape (CT)
Mounting Type	Surface Mount, MLCC	Operating Temperature	-55°C ~ 125°C
Detailed Description	5.6pF ±0.5pF 16V Ceramic Capacitor C0G, NP0 01005 (0402 Metric)	Voltage - Rated	16V
Ratings	-	Size / Dimension	0.016" L x 0.008" W (0.40mm x 0.20mm)
Height - Seated (Max)	-	Features	-
Capacitance	5.6pF	Tolerance	±0.5pF
Applications	General Purpose	Lead Spacing	-
Temperature Coefficient	C0G, NP0	Thickness (Max)	0.009" (0.22mm)
Lead Style	-	Other Names	587-2290-1 EMK042CG5R6DCFW
Category	Capacitors > Ceramic Capacitors	Description	CAP CER 5.6PF 16V NP0 01005
Lead Free Status / RoHS Status	Lead free / RoHS Compliant		

Keywords related to EMK042CG5R6DC-FW

Taiyo Yuden EMK042CG5R6DC-FW	EMK042CG5R6DC-FW part	EMK042CG5R6DC-FW Price	EMK042CG5R6DC-FW Distributor
EMK042CG5R6DC-FW Technical	EMK042CG5R6DC-FW Stock	EMK042CG5R6DC-FW Inventory	EMK042CG5R6DC-FW Supplier
EMK042CG5R6DC-FW Online Order	EMK042CG5R6DC-FW Inquiry	EMK042CG5R6DC-FW Image	EMK042CG5R6DC-FW Picture
EMK042CG5R6DC-FW pdf	EMK042CG5R6DC-FW datasheet	EMK042CG5R6DC-FW data sheet	EMK042CG5R6DC-FW pdf datasheet
Download EMK042CG5R6DC-FW datasheet	Taiyo Yuden Manufacturer	Taiyo Yuden EMK042CG5R6DC-FW	

You May Be Also Be interested In:

 EMK042CG430JC-W Description: CAP CER 43PF 16V C0G 01005 Manufacturers: Taiyo Yuden In Stock: New original, Stock Available. Quote: <input type="button" value="RFQ"/>	 EMK042CG8R2DC-F Description: CAP CER 8.2PF 16V NP0 01005 Manufacturers: Taiyo Yuden In Stock: New original, Stock Available. Quote: <input type="button" value="RFQ"/>	 EMK042CG750JC-W Description: CAP CER 75PF 16V C0G 01005 Manufacturers: Taiyo Yuden In Stock: New original, Stock Available. Quote: <input type="button" value="RFQ"/>
 EMK042CG6R8DC-F Description: CAP CER 6.8PF 16V NP0 01005 Manufacturers: Taiyo Yuden In Stock: New original, Stock Available. Quote: <input type="button" value="RFQ"/>	 EMK042CG560JC-FW Description: CAP CER 56PF 16V NP0 01005 Manufacturers: Taiyo Yuden In Stock: New original, Stock Available. Quote: <input type="button" value="RFQ"/>	 EMK042CG3R9CC-FW Description: CAP CER 3.9PF 16V NP0 01005 Manufacturers: Taiyo Yuden In Stock: New original, Stock Available. Quote: <input type="button" value="RFQ"/>
 EMK042CG820JC-F Description: CAP CER 82PF 16V NP0 01005 Manufacturers: Taiyo Yuden In Stock: New original, Stock Available. Quote: <input type="button" value="RFQ"/>	 EMK042CG3R9CD-W Description: CAP CER 3.9PF 16V NP0 01005 Manufacturers: Taiyo Yuden In Stock: New original, Stock Available. Quote: <input type="button" value="RFQ"/>	 EMK042CG620JC-W Description: CAP CER 62PF 16V C0G 01005 Manufacturers: Taiyo Yuden In Stock: New original, Stock Available. Quote: <input type="button" value="RFQ"/>
 EMK042CG470JC-F Description: CAP CER 47PF 16V NP0 01005 Manufacturers: Taiyo Yuden In Stock: New original, Stock Available. Quote: <input type="button" value="RFQ"/>	 EMK042CG8R2DC-FW Description: CAP CER 8.2PF 16V NP0 01005 Manufacturers: Taiyo Yuden In Stock: New original, Stock Available. Quote: <input type="button" value="RFQ"/>	 EMK042CG510JC-W Description: CAP CER 51PF 16V C0G 01005 Manufacturers: Taiyo Yuden In Stock: New original, Stock Available. Quote: <input type="button" value="RFQ"/>
 EMK042CG5R6DD-W Description: CAP CER 5.6PF 16V NP0 01005 Manufacturers: Taiyo Yuden In Stock: New original, Stock Available. Quote: <input type="button" value="RFQ"/>	 EMK042CG560JC-W Description: CAP CER 56PF 16V C0G 01005 Manufacturers: Taiyo Yuden In Stock: New original, Stock Available. Quote: <input type="button" value="RFQ"/>	 EMK042CG6R8DD-W Description: CAP CER 6.8PF 16V NP0 01005 Manufacturers: Taiyo Yuden In Stock: New original, Stock Available. Quote: <input type="button" value="RFQ"/>
 EMK042CG820JC-FW Description: CAP CER 82PF 16V NP0 01005 Manufacturers: Taiyo Yuden In Stock: New original, Stock Available. Quote: <input type="button" value="RFQ"/>	 EMK042CG8R2DD-W Description: CAP CER 8.2PF 16V NP0 01005 Manufacturers: Taiyo Yuden In Stock: New original, Stock Available. Quote: <input type="button" value="RFQ"/>	 EMK042CG5R6DC-F Description: CAP CER 5.6PF 16V NP0 01005 Manufacturers: Taiyo Yuden In Stock: New original, Stock Available. Quote: <input type="button" value="RFQ"/>
 EMK042CG4R7CD-W Description: CAP CER 4.7PF 16V NP0 01005 Manufacturers: Taiyo Yuden In Stock: New original, Stock Available. Quote: <input type="button" value="RFQ"/>	 EMK042CG470JC-FW Description: CAP CER 47PF 16V NP0 01005 Manufacturers: Taiyo Yuden In Stock: New original, 52 pcs Stock Available. Quote: <input type="button" value="RFQ"/>	 EMK042CG680JC-F Description: CAP CER 68PF 16V NP0 01005 Manufacturers: Taiyo Yuden In Stock: New original, Stock Available. Quote: <input type="button" value="RFQ"/>
 EMK042CG560JC-F Description: CAP CER 56PF 16V NP0 01005 Manufacturers: Taiyo Yuden In Stock: New original, Stock Available. Quote: <input type="button" value="RFQ"/>	 EMK042CG4R7CC-F Description: CAP CER 4.7PF 16V NP0 01005 Manufacturers: Taiyo Yuden In Stock: New original, Stock Available. Quote: <input type="button" value="RFQ"/>	 EMK042CG4R7CC-FW Description: CAP CER 4.7PF 16V NP0 01005 Manufacturers: Taiyo Yuden In Stock: New original, Stock Available. Quote: <input type="button" value="RFQ"/>
 EMK042CG680JC-FW Description: CAP CER 68PF 16V NP0 01005 Manufacturers: Taiyo Yuden In Stock: New original, Stock Available. Quote: <input type="button" value="RFQ"/>	 EMK042CG4R7BC-FW Description: EMK042CG4R7BC-FW TAIYO 0201 Manufacturers: TAIYO In Stock: New original, 18400 pcs Stock Available. Quote: <input type="button" value="RFQ"/>	 EMK042CG820JC-W Description: CAP CER 82PF 16V C0G 01005 Manufacturers: Taiyo Yuden In Stock: New original, Stock Available. Quote: <input type="button" value="RFQ"/>
 EMK042CG680JC-W Description: CAP CER 68PF 16V C0G 01005 Manufacturers: Taiyo Yuden In Stock: New original, Stock Available. Quote: <input type="button" value="RFQ"/>	 EMK042CG6R8DC-FW Description: CAP CER 6.8PF 16V NP0 01005 Manufacturers: Taiyo Yuden In Stock: New original, Stock Available. Quote: <input type="button" value="RFQ"/>	 EMK042CG470JC-W Description: CAP CER 47PF 16V C0G 01005 Manufacturers: Taiyo Yuden In Stock: New original, Stock Available. Quote: <input type="button" value="RFQ"/>



IC Components Limited
WWW.IC-COMPONENTS.COM

Email: Info@IC-Components.com
TEL: 00 852 - 30501935
FAX: 00 852 - 30501945

Address: 6H Block 1, Sherwood Court, Kingswood Villa, Tin Shui Wai, New Territories, Hong Kong