

**muRata**  
INNOVATOR IN ELECTRONICS



IC Components Limited

### QGM1885C2A2R7CB01D

Manufacturer Part Number:	QGM1885C2A2R7CB01D
Manufacturer / Brand	Murata Electronics
Part of Description:	CAP CER 2.7PF 100V C0G/NP0 0603
Datasheets:	<a href="#">QGM1885C2A2R7CB01D(1).pdf</a> <a href="#">QGM1885C2A2R7CB01D(2).pdf</a>
Lead Free Status / RoHS Status:	Lead free / RoHS Compliant
Stock Condition:	New original, Stock Available.
Ship From:	Hong Kong
Shipment Way:	DHL/Fedex/TNT/UPS

GET A QUOTE

**QGM1885C2A2R7CB01D** 100% New Original Opes in Stock, Find QGM1885C2A2R7CB01D Price, Stock, datasheet at IC Components Ltd Online, buy QGM1885C2A2R7CB01D Murata Electronics with warrantied. 100% guarantee confidence. RFQ QGM1885C2A2R7CB01D: [Info@IC-Components.com](mailto:Info@IC-Components.com)

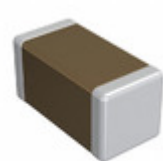
### The specifications of QGM1885C2A2R7CB01D

Part Number	QGM1885C2A2R7CB01D	Manufacturer / Brand	Murata Electronics
Series	QGM	Moisture Sensitivity Level (MSL)	1 (Unlimited)
Package / Case	0603 (1608 Metric)	Packaging	Original-Reel®
Mounting Type	Surface Mount, MLCC	Operating Temperature	-55°C ~ 125°C
Detailed Description	2.7pF ±0.25pF 100V Ceramic Capacitor C0G, NP0 0603 (1608 Metric)	Voltage - Rated	100V
Ratings	-	Size / Dimension	0.063" L x 0.032" W (1.60mm x 0.80mm)
Height - Seated (Max)	-	Features	High Q, Low Loss
Capacitance	2.7pF	Tolerance	±0.25pF
Applications	RF, Microwave, High Frequency	Lead Spacing	-
Temperature Coefficient	C0G, NP0	Thickness (Max)	0.032" (0.80mm)
Lead Style	-	Other Names	490-12602-6
Category	<a href="#">Capacitors</a> > <a href="#">Ceramic Capacitors</a>	Description	CAP CER 2.7PF 100V C0G/NP0 0603
Lead Free Status / RoHS Status	Lead free / RoHS Compliant		

### Keywords realted to QGM1885C2A2R7CB01D

Murata Electronics QGM1885C2A2R7CB01D	QGM1885C2A2R7CB01D part	QGM1885C2A2R7CB01D Price	QGM1885C2A2R7CB01D Distributor
QGM1885C2A2R7CB01D Technical	QGM1885C2A2R7CB01D Stock	QGM1885C2A2R7CB01D Inventory	QGM1885C2A2R7CB01D Supplier
QGM1885C2A2R7CB01D Online Order	QGM1885C2A2R7CB01D Inquiry	QGM1885C2A2R7CB01D Image	QGM1885C2A2R7CB01D Picture
QGM1885C2A2R7CB01D pdf	QGM1885C2A2R7CB01D datasheet	QGM1885C2A2R7CB01D data sheet	QGM1885C2A2R7CB01D pdf datasheet
Download QGM1885C2A2R7CB01D datasheet	Murata Electronics Manufacturer	Murata Electronics QGM1885C2A2R7CB01D	MURATA QGM1885C2A2R7CB01D
Murata Electronics North America	TOKO / Murata QGM1885C2A2R7CB01D		
QGM1885C2A2R7CB01D			

### You May Be Also Be interested In:



#### QGM1885C2A3R9CB01D

**Description:** CAP CER 3.9PF 100V C0G/NP0 0603  
**Manufacturers:** Murata Electronics  
**In Stock:** New original, Stock Available.

Quote:

RFQ

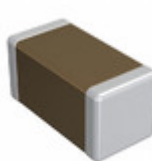


#### QGM1885C2A1R8BB01D

**Description:** CAP CER 1.8PF 100V C0G/NP0 0603  
**Manufacturers:** Murata Electronics  
**In Stock:** New original, Stock Available.

Quote:

RFQ

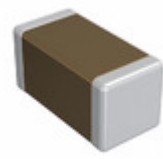


#### QGM1885C2A4R0CB01D

**Description:** CAP CER 4PF 100V C0G/NP0 0603  
**Manufacturers:** Murata Electronics  
**In Stock:** New original, Stock Available.

Quote:

RFQ

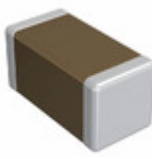


#### QGM1885C2A1R1BB01D

**Description:** CAP CER 1.1PF 100V C0G/NP0 0603  
**Manufacturers:** Murata Electronics  
**In Stock:** New original, Stock Available.

Quote:

RFQ

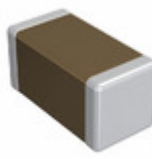


#### QGM1885C2A2R2CB01D

**Description:** CAP CER 2.2PF 100V C0G/NP0 0603  
**Manufacturers:** Murata Electronics  
**In Stock:** New original, Stock Available.

Quote:

RFQ



#### QGM1885C2A2R2BB01D

**Description:** CAP CER 2.2PF 100V C0G/NP0 0603  
**Manufacturers:** Murata Electronics  
**In Stock:** New original, Stock Available.

Quote:

RFQ

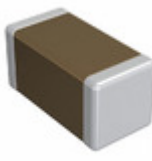


#### QGM1885C2A2R7BB01D

**Description:** CAP CER 3.9PF 100V C0G/NP0 0603  
**Manufacturers:** Murata Electronics  
**In Stock:** New original, Stock Available.

Quote:

RFQ

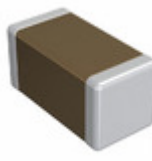


#### QGM1885C2A1R5BB01D

**Description:** CAP CER 1.5PF 100V C0G/NP0 0603  
**Manufacturers:** Murata Electronics  
**In Stock:** New original, 810 pcs Stock Available.

Quote:

RFQ



#### QGM1885C2A1R2BB01D

**Description:** CAP CER 1.2PF 100V C0G/NP0 0603  
**Manufacturers:** Murata Electronics  
**In Stock:** New original, Stock Available.

Quote:

RFQ

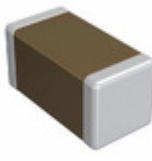


#### QGM1885C2A3R6BB01D

**Description:** CAP CER 3.6PF 100V C0G/NP0 0603  
**Manufacturers:** Murata Electronics  
**In Stock:** New original, Stock Available.

Quote:

RFQ

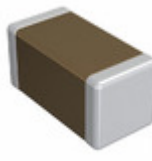


#### QGM1885C2A3R3BB01D

**Description:** CAP CER 3.3PF 100V C0G/NP0 0603  
**Manufacturers:** Murata Electronics  
**In Stock:** New original, Stock Available.

Quote:

RFQ

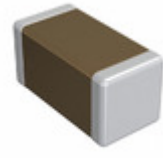


#### QGM1885C2A1R8CB01D

**Description:** CAP CER 1.8PF 100V C0G/NP0 0603  
**Manufacturers:** Murata Electronics  
**In Stock:** New original, Stock Available.

Quote:

RFQ

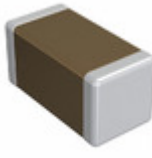


#### QGM1885C2A3R6CB01D

**Description:** CAP CER 3.6PF 100V C0G/NP0 0603  
**Manufacturers:** Murata Electronics  
**In Stock:** New original, Stock Available.

Quote:

RFQ

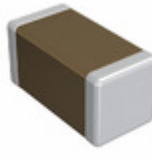


#### QGM1885C2A5R0BB01D

**Description:** CAP CER 5PF 100V C0G/NP0 0603  
**Manufacturers:** Murata Electronics  
**In Stock:** New original, Stock Available.

Quote:

RFQ

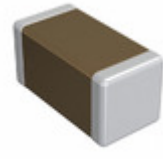


#### QGM1885C2A1R3BB01D

**Description:** CAP CER 1.3PF 100V C0G/NP0 0603  
**Manufacturers:** Murata Electronics  
**In Stock:** New original, Stock Available.

Quote:

RFQ

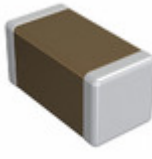


#### QGM1885C2A4R0BB01D

**Description:** CAP CER 4PF 100V C0G/NP0 0603  
**Manufacturers:** Murata Electronics  
**In Stock:** New original, Stock Available.

Quote:

RFQ

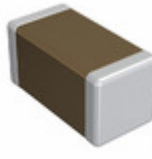


#### QGM1885C2A3R3CB01D

**Description:** CAP CER 3.3PF 100V C0G/NP0 0603  
**Manufacturers:** Murata Electronics  
**In Stock:** New original, Stock Available.

Quote:

RFQ

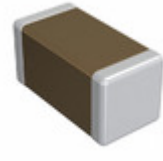


#### QGM1885C2A4R3BB01D

**Description:** CAP CER 4.3PF 100V C0G/NP0 0603  
**Manufacturers:** Murata Electronics  
**In Stock:** New original, Stock Available.

Quote:

RFQ

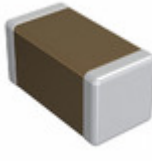


#### QGM1885C2A3R0BB01D

**Description:** CAP CER 3PF 100V C0G/NP0 0603  
**Manufacturers:** Murata Electronics  
**In Stock:** New original, Stock Available.

Quote:

RFQ

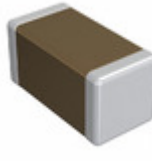


#### QGM1885C2A2R0BB01D

**Description:** CAP CER 2PF 100V C0G/NP0 0603  
**Manufacturers:** Murata Electronics  
**In Stock:** New original, Stock Available.

Quote:

RFQ

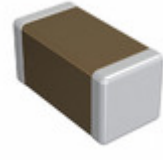


#### QGM1885C2A4R7WB01D

**Description:** CAP CER 4.7PF 100V C0G/NP0 0603  
**Manufacturers:** Murata Electronics  
**In Stock:** New original, Stock Available.

Quote:

RFQ



#### QGM1885C2A1R5CB01D

**Description:** CAP CER 1.5PF 100V C0G/NP0 0603  
**Manufacturers:** Murata Electronics  
**In Stock:** New original, Stock Available.

Quote:

RFQ

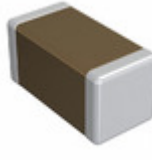


#### QGM1885C2A3R0CB01D

**Description:** CAP CER 3PF 100V C0G/NP0 0603  
**Manufacturers:** Murata Electronics  
**In Stock:** New original, Stock Available.

Quote:

RFQ



#### QGM1885C2A4R7BB01D

**Description:** CAP CER 4.7PF 100V C0G/NP0 0603  
**Manufacturers:** Murata Electronics  
**In Stock:** New original, Stock Available.

Quote:

RFQ



#### QGM1885C2A2R0CB01D

**Description:** CAP CER 2PF 100V C0G/NP0 0603  
**Manufacturers:** Murata Electronics  
**In Stock:** New original, Stock Available.

Quote:

RFQ

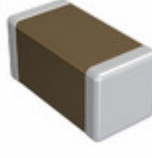


#### QGM1885C2A2R4BB01D

**Description:** CAP CER 2.4PF 100V C0G/NP0 0603  
**Manufacturers:** Murata Electronics  
**In Stock:** New original, Stock Available.

Quote:

RFQ



#### QGM1885C2A4R7CB01D

**Description:** CAP CER 4.7PF 100V C0G/NP0 0603  
**Manufacturers:** Murata Electronics  
**In Stock:** New original, Stock Available.

Quote:

RFQ



#### QGM1885C2A3R9BB01D

**Description:** CAP CER 3.9PF 100V C0G/NP0 0603  
**Manufacturers:** Murata Electronics  
**In Stock:** New original, Stock Available.

Quote:

RFQ

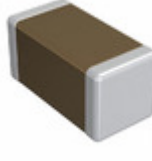


#### QGM1885C2A1R6BB01D

**Description:** CAP CER 1.6PF 100V C0G/NP0 0603  
**Manufacturers:** Murata Electronics  
**In Stock:** New original, Stock Available.

Quote:

RFQ



#### QGM1885C2A1R2CB01D

**Description:** CAP CER 1.2PF 100V C0G/NP0 0603  
**Manufacturers:** Murata Electronics  
**In Stock:** New original, Stock Available.

Quote:

RFQ



**IC Components Limited**  
WWW.IC-COMPONENTS.COM

Email: [Info@IC-Components.com](mailto:Info@IC-Components.com)

TEL: 00 852 - 30501935

FAX: 00 852 - 30501945

Address: 6H Block 1, Sherwood Court, Kingswood Villa, Tin Shui Wai, New Territories, Hong Kong